



APRIL 4 - 6, 2024

# WORLD SHOOTING CHAMPIONSHIP

PRESENTED BY WALTHER



INFORMATION AT [WSC.NRA.ORG](http://WSC.NRA.ORG)

Conducted by  
The National Rifle Association of America  
Held at Camp Atterbury, IN

---

**OFFICIAL PROGRAM**



INTRODUCING THE WALTHER  
**PDP MATCH**





**THANK YOU TO ALL OUR  
2024 SPONSORS!**

**THANK YOU TO OUR PRESENTING SPONSOR**



**OFFICIAL AMMO PARTNER**



**Practiscore**



**SAR**



**OFFICIAL CLEANING  
PRODUCT PARTNER**



**SMART GUN CARE**



**GT  
Targets**



**Promatic**

**Silver  
Mountain  
Targets**

**Baron's  
Engraving**

**Indiana State  
Rifle & Pistol  
Association**

**MGM  
Targets**



**White Flyer**

**National Rifle Association of America**  
11250 Waples Mill Rd, Fairfax, VA 22030  
Competitive Shooting Division  
[www.nra.org](http://www.nra.org)



INTRODUCING THE WALTHER

# PDP MATCH STEEL FRAME



PRESENTED BY





# **WORLD SHOOTING CHAMPIONSHIP**

CHAMPIONSHIP OFFICIALS	5
PREVIOUS CHAMPIONS	7
SCHEDULE OF EVENTS	9
LOGISTICS	11
REGISTRATION	13
STAGES	17
TOURNAMENT CONDITIONS	33
AWARDS	42
SQUADDING MATRIX	45
MAP	50



# Celebrating 75 Years of Rugged, Reliable Firearms®



In 2024, Ruger proudly celebrates 75 years of manufacturing rugged, reliable firearms. To commemorate this occasion, Ruger is proud to announce four 75th Anniversary Models, a Mark IV™ pistol, two different 10/22® rifles and an LCP® MAX, each representative of Ruger's storied past and bright future. These commemorative models are inspired by iconic Ruger products, and represent each of our three major manufacturing facilities.



The acquisition, ownership, possession and use of firearms are heavily regulated. Some models may not be legally available in your state or locale. Whatever your purpose for lawfully acquiring a firearm – know the law, get trained and shoot safely.



## CHAMPIONSHIP OFFICIALS

### Match Director

Aaron Farmer

### Match Assistant

Chad Barber

### Match Staff/Media Liaison

Tom Yost

### Emcee

Aaron Farmer

### Area Director | Stage 1 – 3 | Side Match 1 - 3

Nick Roberge

### Area Director | Stages 4 – 8 |

Carry Hennigh

### Area Director | Stages 9 - 12 |

Chris Niner

### Area Director | Side Match 4-7

Gilbert Padilla

Contents

Officials

Champions

Schedule

Logistics

Registration

Stages

Conditions

Awards

Squadding

Map



WEATHERBY®

**MODEL 307™**

**RANGE™ XP**



LEARN MORE AT [WEATHERBY.COM](http://WEATHERBY.COM)

# NRA WORLD SHOOTING CHAMPIONSHIP

## PREVIOUS CHAMPIONS

2014	DANIEL HORNER
2015	BRUCE PIATT
2016	DOUG KOENIG
2017	GREG JORDAN
2018	TIM YACKLEY
2019	GREG JORDAN





**NEW KDS9C**

**UNMATCHED**



## NEW FEATURES\*



ACCESSORY RAIL



AMBIDEXTROUS SAFETY



18+1 ROUND CAPACITY

\*HOLOSUN OPTIC AND SUREFIRE LIGHT NOT INCLUDED



[KIMBERAMERICA.COM](http://KIMBERAMERICA.COM)

*Kimber*

WHAT ALL GUNS SHOULD BE™

SCHEDULE OF EVENTS

All times and locations are subject to change.

WEDNESDAY, APRIL 3, 2024

Location: MTF building Camp Atterbury, IN.

- 2 pm – 7 pmRegistration & Packet Pick Up
- 7 pm – 9 pmCompetitor Brief

THURSDAY, FRIDAY, SATURDAY,  
APRIL 4, 5, 6, 2024

Location: Camp Atterbury

- 6:30 amAM Squads Arrive at Assigned Stage
- 7 amCompetition Begins
- 1 pm – 1:45 pmStaff Lunch – Range is Cold
- 12:45 pmPM Squads Arrive at Assigned Stage
- 2 pmCompetition Begins
- 8 pmShooting Concludes

SATURDAY, APRIL 6

Location: Camp Atterbury, IN.

- 6 pmMTF Opens
- 8 pmDinner
- 9 pmThe awards ceremony is held at the MTF building on Camp Atterbury





# GEAR UP!



**MAGNUM  
RESEARCH®**

[WWW.MAGNUMRESEARCH.COM](http://WWW.MAGNUMRESEARCH.COM)



@magnumresearchinc



**WORLD  
SHOOTING  
CHAMPIONSHIP**

CAMP ATTERBURY

The Department of Defense has upgraded security at Camp Atterbury to that of an active duty military base. Everyone arriving on the base will have to be vetted. This process takes less than 5 minutes. Here is the procedure:

Monday thru Thursday, 9am to 12pm, vetting is done at the Welcome Center. This is the first building on the right, as you come down the hill, just before the main gate.

Monday thru Thursday 12p to 10p and Friday 9a to 10p vetting is done at the front gate.

If you arrive at any other time, a visitor pass will be issued at the front gate. You will be required to return the pass to the Welcome Center or Main Gate to be vetted.

Retired and Active Duty Military Personnel are exempt from this procedure. Please show your military identification at the Main Gate.

LOGISTICS

NRA HQ OFFICE & CHAMPIONSHIP REGISTRATION

3008 Old Hospital Rd. Camp Atterbury, IN. 46124  
MTF Building #40181

CAMPGROUNDS AND RV’S

Campgrounds and RV’s  
Whitaker Place Campground

Camp Atterbury  
3008 Old Hospital Road | Edinburgh, Indiana 46124  
812-526-1128

Johnson County Park  
2949 East North Street | Nineveh, IN 46164  
812-526-6809 | [www.jocoparks.com](http://www.jocoparks.com)

LODGING

Camp Atterbury lodging consists of hotel buildings, suites and standard rooms.  
Camp Atterbury Billeting  
812-526-1128

Check in at Billeting is between 2p and 4p, Monday thru Friday. Any other time, ask for you room key at the front gate.

Check out is 10am. Late check out requires prior arrangement and may incur additional charges. When checking out, leave your key at billeting or drop it in the drop box located at the front door of Billeting.

Please note:

Pets are permitted at the MWR Campground, must be on a leash at all times and owners are responsible for keeping the area clean.

If no rooms are available on base through billeting we have open squadbays available. Please contact [tsutherland@nrahq.org](mailto:tsutherland@nrahq.org) or 703-267-1450 to reserve a bed. Linnen is available and you are urged to bring 2 locks to secure your items. A foot locker and wall locker is available. Cost will be \$120 per person.

Service Dogs are permitted with documentation. Documentation for Service Dogs shall be presented at Lodging when checking in. NOTE: Emotional Support animals are not recognized as service animals on Camp Atterbury.

## **TRAVEL**

### **Indianapolis International Airport**

7800 Col. H. Weir Cook Memorial Drive  
Indianapolis, IN 46241

### **Columbus Municipal Airport**

4770 Ray Boll Blvd. | Columbus, IN 47203  
FBO, fuel, ground support

## **TELEPHONE INQUIRIES**

Competitors are responsible for providing their own transportation to and from the range as well as securing lodging and travel to and from the Championship. For further information on interstate transportation of firearms, visit [nraila.org](http://nraila.org).

## **MEALS**

**Meals are the responsibility of the competitor.**



# REGISTRATION

## COMPETITOR ELIGIBILITY

The NRA World Shooting Championship is open for registration to all legally permitted, responsible U.S. citizens, and legally permitted, responsible non-U.S. citizens who are members in good standing of their respective national shooting federations.

## ENTRY LIMIT

The first 288 competitors will receive entry into the Championship. Once the match is full, competitors may add themselves to the waitlist.

## ENTER ONLINE

Enter the NRA World Shooting Championship at <https://competitor.nra.org>.

## GUEST ENTRY

Any individual, including non-firing guests, who are present at the NRA World Shooting Championship, must register at the Registration Office or check in at the NRA HQ Office to receive an event pass.

## ENTRY CHANGES

Competitors must enter the correct division. A competitor who has any changes to their entry must notify NRA staff prior to the close of registration. Division changes can occur in the Statistical Office prior to the start of the Championship. Match staff will not make changes to entries on the range.

## REGISTRATION

Registration is an opportunity for competitors to mingle with match sponsors, receive competitor packets and finalize squadding. See the schedule of events for registration and packet pick details.

## SQUADDING

Competitors will self-squad via Practiscore. The Match Director reserves the right to change squadding as necessary. Competitor packets will include squad sheets detailing competitor firing times and dates for the Championship and Side Matches.

Competitors will report to and remain in the staging area provided at each bay fifteen (15) minutes prior to their assigned firing time. The CRO will deliver a stage brief 15 minutes prior to the start of each stage and allow for a 10 minute walk through if applicable.



TAURUS  
**GX4™**  
CARRY

# THE ULTIMATE CARRY GUN.

FOR THE ULTIMATE  
EDC ENTHUSIAST.

OPTIC-READY  
TORO SLIDE

PICATINNY  
RAIL

INTERCHANGEABLE  
BACKSTRAPS

9MM,  
15-ROUND  
CAPACITY

RELY ON  TAURUS®

TaurusUSA.com

## REFUNDS

The NRA World Shooting Championship has a no refund policy. However, NRA reserves the right to issue a refund at its sole determination for documented medical emergencies. Send cancellation requests in writing via email to [comphep@nrahq.org](mailto:comphep@nrahq.org). NRA will give consideration for extenuating circumstances.

## COMPETITORS BRIEF & RULES Q&A

Competitors must attend the competitors brief after registration. See the schedule of events for details. At this time, competitors may seek clarification on events, rules, and safety practices.

## DIVISIONS

Competitors may register as an individual into the Professional or Amateur division. A Professional is any individual who receives financial support over \$2,000 per year in products, cash, or services in support of competitive shooting participation. A professional is also any competitor who has placed in the "top 5" of the Amateur Category in any previous NRA World Shooting Championship (2014 - 2018). An Amateur is anyone who does not meet the definition of the "Professional."

## CATEGORIES

Competitors may register as an individual into the Lady or Junior category. An Amateur Junior is aged 12 to 17 at the start of the match.

## ENTRY FEES

Professional	375	
Amateur	325	
Junior Amateur	325	
Mulligan (Pro)	50	<i>Limit 1 per Entry</i>
Mulligan (Am)		<i>1 free with Entry</i>

SAR9  
SUBCOMPACT GEN2



# CONCEALED CARRY REDEFINED



STAGES

NRA WORLD SHOOTING CHAMPIONSHIP

The NRA World Shooting Championship is a Squadded Individual Match that consists of twelve (12) fired events, which occur over three (3) days.

- Stage 1

Sporting Clays
- Stage 2

Precision Standing Air Gun
- Stage 3

NRA Americas Rifle Challenge
- Stage 4

NRA Precision Pistol
- Stage 5

FITASC
- Stage 6

3 Gun
- Stage 7

NRA Mid-Range AR-Tactical
- Stage 8

Biathlon
- Stage 9

SASS
- Stage 10

PRS
- Stage 11

Scholastic Action Shooting
- Stage 12

USPSA
- Side Match 1

Walther Experience (not for score)
- Side Match 2

Star Power
- Side Match 3

Knock it Off
- Side Match 4

Rim Fire Falling Plate Blues
- Side Match 5

Bianchi Plates
- Side Match 6

IDPA Slice the Pie
- Side Match 7

2-Gun Plate blast



# FOSTECH

ONE OF THE LIGHTEST  
AR-15'S ON THE MARKET TODAY!



## FEATURES

- FOSTECH LIGHTWEIGHT STEALTH LOWER & UPPER RECEIVER
- APPROXIMATE WEIGHT 4.93 LBS
- 2.23 / 5.56 / .22LR / .300 BLK
- 16" FAXON GUNNER BARREL
- FOSTECH MACH 1 16" RAIL
- FOSTECH LOW MASS BCG
- FOSTECH SABRE COMFORT GRIP
- FOSTECH ANTI WALK PINS
- TRIGGER OPTIONS: ECHO AR II, ECHO SPORT, OR SINGLE STAGE
- FOSTECH TOMAHAWK STOCK
- (1) 30 ROUND MAGAZINE
- PLASTIC CARRY CASE



# FOS'TECH

WWW.FOSTECH.COM

## STAGE 1 SPONSOR

Shotgun  
Ammunition  
Thrower  
Course of fire  
Targets  
Scoring Type  
Par Time  
Supporting  
Sponsors

## SPORTING CLAYS TRISTAR

Tristar Raptor Synthetic Semi-Auto  
Rio 12ga 2 ¾", 1 1/8oz 1300fps #7.5  
Promatic  
Static  
Frangible  
Hits  
No  
  
Promatic, Hi-Viz

## STAGE 2 SPONSOR

Air Rifle  
Ammunition  
Course of fire  
Targets  
Scoring Type  
Par Time  
Learn More

## PRECISION AIR RIFLE STANDING Walther

Walther LG400 Blutec  
Pellets  
10 Meter 10rnds  
AR/5 10  
Points  
12min  
Walther Arms:  
Explore Our Exceptional Handguns

## STAGE 3 SPONSOR

Rifle  
Optic  
Ammunition  
Course of fire  
Targets  
Scoring Type  
Par Time  
Learn More

## NRA AMERICA'S RIFLE CHALLENGE ACME Machine

ACME Machine AM15  
ACME Machine 1x6 FFP  
Fiocchi 5.56  
Field Course  
Mixed Steel and Paper  
Time Plus  
180 sec  
ACME Machine

Contents

Officials

Champions

Schedule

Logistics

Registration

Stages

Conditions

Awards

Squadding

Map

# BRING DOWN THE HOUSE

WITH PERFORMANCE  
AND PRECISION.

## TT-15

COMPETITION TRAP GUNS

Quality, workmanship, and functional style are the foundation of the TriStar TT-15 trap gun line. Crafted with pride into a full range of competition models, all TT-15 doubles and combo trap guns now come standard with a fully adjustable Turkish walnut stock, auto-ejectors, adjustable rib with fiber-optic sight, and color-coded, extended Beretta/Benelli MobilChokes. Put yourself behind a TriStar and achieve the success that shooting confidence can bring.

**All TriStar TT-15 double, combo, unsingle, top single and mono trap guns come standard with a fully adjustable stock, allowing it to grow with your young shooter.**

Mono, Top Single, Unsingle, Double Trap, and Combo (Unsingle/Double Trap) models are available.

TT-15 DTA 32"

# TriStar

TRISTARARMS.COM



1816 Linn Street, North Kansas City, MO 64116 • 816.421.1400 • 3-year Limited Warranty

## STAGE 4 SPONSOR

## NRA PRECISION PISTOL Kimber

Pistol	RAPIDE Dusk or TLE
Ammunition	Fiocchi
Course of fire	NRA Precision Pistol 25yd Slow Fire
Targets	B8
Scoring Type	Points
Par Time	15 min
Learn More	Kimber America   Kimber America   Fine 1911 Pistols and Rifles

## STAGE 5 SPONSOR

## FITASC Weatherby

Shotgun	Orion Over Under
Ammunition	Rio 12ga 2 ¾", 1oz 1250fps #7.5
Course of fire	Field Course
Targets	Frangible
Scoring Type	Hits
Par Time	No
Learn More	

## STAGE 6 SPONSOR

## 3-GUN Ruger, Canik, Vortex, Fiocchi

Rifle	Ruger AR-5.56 with Magpul
Optic	Vortex Razor 1-6 HD Gen II E
Pistol	Canik Rival
Optic	McCanik Red Dot MO3
Shotgun	Mossberg JM Pro
Optic	Vortex Venom Red Dot
Ammunition	PMC 55gr 5.56, PMC 115gr 9mm, Fiocchi 12ga #8
Course of fire	Field Course
Targets	Mixed Steel and Paper
Scoring Type	Time Plus
Par Time	180 Sec
Learn More	Ruger® Firearms , Canik USA - Superior Firearms , O.F. Mossberg & Sons   American Built. American Strong. O.F. Mossberg & Sons , Vortex Optics - Home , www.PMCammo.com

Contents
Officials
Champions
Schedule
Logistics
Registration
Stages
Conditions
Awards
Squadding
Map



# ACME MACHINE

PRECISION

AND QUALITY

MANUFACTURED

INDIANA - OHIO - IOWA



AR **NRA** AMERICA'S RIFLE  
CHALLENGE  
**AM-15**

[WWW.ACMEMACHINE.COM](http://WWW.ACMEMACHINE.COM)



## STAGE 7 SPONSOR

Rifle	Ruger AR-5.56 with Magpul
Optic	Vortex Razor 1-6 HD Gen II E
Ammunition	Federal .223 GM 69
Course of fire	NRA Mid-Range Slow Fire
Targets	Paper MR-5 w/electronic scoring
Scoring Type	Points
Par Time	10 min
Learn More	Ruger® Firearms, home (silvermountaintargets.com) , Vortex Optics - Home

## STAGE 8 SPONSOR

## NRA MID-RANGE A/R TACTICAL Ruger

Rifle	MLR22AT Switchbolt
Optic	Vortex Venom Red Dot
Ammunition	CCI Mini Mag 40gr
Course of fire	Field Course
Targets	Adjustable Plate Rack
Scoring Type	Hits
Par Time	160 Sec
Learn More	Magnum Research, Inc.   Desert Eagle pistols and BFR revolvers , Vortex Optics - Home

## STAGE 9 SPONSOR

Rifle	H006GM Big Boy
Pistol	7GDM Big Boy
Ammunition	PMC .38 SP 132gr
Course of fire	Field Course
Targets	Steel
Scoring Type	Hits
Par Time	120 Sec
Learn More	Henry Repeating Arms (henryusa.com) , www.PMCammo.com

## COWBOY ACTION Henry

Rifle	H006GM Big Boy
Pistol	7GDM Big Boy
Ammunition	PMC .38 SP 132gr
Course of fire	Field Course
Targets	Steel
Scoring Type	Hits
Par Time	120 Sec
Learn More	Henry Repeating Arms (henryusa.com) , www.PMCammo.com

Contents	Officials	Champions	Schedule	Logistics	Registration	Stages	Conditions	Awards	Squadding	Map
----------	-----------	-----------	----------	-----------	--------------	--------	------------	--------	-----------	-----



**WHENEVER,  
WHEREVER,  
WHATEVER.**

**Trusted** by professionals **since 1985**, the pioneer in Breech-to-Muzzle® cleaning now offers brass cleaning rods and accessories. Same USA made quality. Same **Smart Gun Care**. Only from Otis.

**OTIS**  
TECHNOLOGY

**PROUDLY MADE IN AMERICA**  
LEARN MORE AT **OTISTEC.COM**

**CLEAN WITH OTIS**

## STAGE 10 SPONSOR

Rifle  
Optic  
Ammunition  
Course of fire  
Targets  
Scoring Type  
Par Time  
Learn More

## PRS Ruger

Ruger Precision  
Vortex Razor 3x15 HDLHT  
Federal GM .308 168GR  
Field Course  
Steel  
Hits  
120 Sec  
Ruger® Firearms , Vortex Optics - Home

## STAGE 11 SPONSOR

Pistol  
Optic  
Ammunition  
Course of fire  
Targets  
Scoring Type  
Par Time  
Learn More

SASP  
SAR  
SAR9 Sport Gen3  
Holosun  
Federal 9mm 115gr  
Field Course  
Steel  
Hits  
30 Sec  
Home - SAR USA

## STAGE 12 SPONSOR

Pistol  
Ammunition  
Course of fire  
Targets  
Mix Papper and Steel  
Scoring Type  
Par Time  
Learn More  
Handguns

## USPSA Walther

PDP Match Polymer  
PMC 9mm 115gr  
Field Course  
Time Plus  
120 Sec  
Walther Arms: Explore Our Exceptional

Contents	Officials	Champions	Schedule	Logistics	Registration	Stages	Conditions	Awards	Squadding	Map
----------	-----------	-----------	----------	-----------	--------------	--------	------------	--------	-----------	-----

# CANiK

SUPERIOR FIREARMS

# FORGED FOR SUPERIORITY

SFX RIVAL-S



SFX RIVAL-S<sup>DARK SIDE</sup>

FOLLOW@CANIKUSA :



CANIKUSA.COM

## **SIDE MATCH 1** **Walther Experience** **SPONSOR** **WALTHER**

Firearms	Per Walther
Course of fire	Field Course
Targets	Mix Paper and Steel
Scoring Type	Not for Score / Own stage
Par Time	180 sec
Learn More	Walther Arms: Explore Our Exceptional Handguns

## **SIDE MATCH 2** **Star Power** **SPONSOR** **TAURUS**

Pistol	Defender 856
Optic	Holosun K
Pistol	Judge Executive Grade
Ammunition	PMC .38spl ; .45LC
Course of fire	Field Course
Targets	Steel
Scoring Type	Time Plus
Par Time	90 Sec
Learn More	Taurus USA - Award Winning Pistols & Revolvers

## **SIDE MATCH 3** **Knock it Off** **SPONSOR** **KELTEC**

Shotgun	Keltec KS7
Ammunition	Rio 12ga 2 ¾", 1oz 1250fps #7.5
Course of fire	Field Course
Targets	Steel
Scoring Type	Time Plus
Par Time	90 Sec
Learn More	American Firearm Manufacturer of Pistols, Rifles & Shotguns   KelTec (keltecweapons.com)

Contents

Officials

Champions

Schedule

Logistics

Registration

Stages

Conditions

Awards

Squadding

Map



## RED WHITE & PEW

What's more American than the crack of a 22 and the ring of steel? The satisfaction of putting your name on the leaderboard and food on the table? CCI® makes it all happen with the best rimfire loads in every category—and we've been doing it since 1951.

Proudly made in the USA.



LEARN MORE AT  
[cci-ammunition.com](http://cci-ammunition.com)

THE LEADER IN RIMFIRE AMMUNITION®

© 2024 CCI Ammunition



## **SIDE MATCH 4** **Rimfire Falling Plate Blues** **SPONSOR** **FOSTECH**

Rifle	Tech-15 Stryker
Ammunition	CCI Mini mag 40gr
Optic	Vortex 1-6x24
Course of fire	Field Course
Targets	
Steel	
Scoring Type	Time Plus
Par Time	30 Sec
Learn More	Fostech.com , Vortex Optics - Home

## **SIDE MATCH 5** **Bianchi Plates** **SPONSOR** **TAURUS**

Pistol	Taurus Tracker
Ammunition	PMC .38sp 132gr
Course of fire	Field Course
Targets	A series of six (6) 8" diameter round steel falling plates
Scoring Type	Time Plus
Par Time	30 Sec
Learn More	Taurus USA - Award Winning Pistols & Revolvers

## **SIDE MATCH 6** **IDPA Slice the Pie** **SPONSOR** **RUGER**

Pistol	Ruger Security 9 Model 3825
Ammunition	PMC 9mm 115gr
Course of fire	Field Course
Targets	Steel
Scoring Type	Time Plus
Par Time	30 Sec
Learn More	Ruger® Firearms , Vortex Optics - Home

Contents

Officials

Champions

Schedule

Logistics

Registration

Stages

Conditions

Awards

Squadding

Map



HOLOSUN

# CONQUER THE COMPETITION

HS507COMP

The Holosun 507 Competition optic is the ultimate solution for shooters looking to take their skills to the next level.

HOLOSUN.COM

<b>SIDE MATCH 7</b>	<b>2-Gun Plate Blast</b>
<b>SPONSOR</b>	<b>KELTEC</b>
Rifle	Keltec Sub2000 9mm
Optic	Vortex SPARC AR 3MOA
Pistol	P15 9mm
Ammunition	PMC 9mm 115gr
Course of fire	Field Course
Targets	Steel
Scoring Type	Time Plus
Par Time	60 Sec
Learn More	American Firearm Manufacturer of Pistols, Rifles & Shotguns   KelTec (keltecweapons.com) , Vortex Optics - Home

Contents	Officials	Champions	Schedule	Logistics	Registration	Stages	Conditions	Awards	Squadding	Map
----------	-----------	-----------	----------	-----------	--------------	--------	------------	--------	-----------	-----

# WINNING INSIGHTS.

It all happens so very fast...heart racing, muzzle rising, eyes acquiring the target...not the time for compromise. This event is yours to win or lose...then there's the moment that it all becomes **clear**.

Whether in the field or in competition your sight package should enhance your speed, not slow you down. HIVIZ LiteWave H3<sup>®</sup> combines proven tritium technology with our legendary Litepipe element to offer you unequaled firing solutions regardless of light or weather.

LEARN MORE AT [HIVIZSIGHTS.COM](https://hivizsights.com)



SEE WHAT YOU'VE BEEN MISSING

**HIVIZ**<sup>®</sup>  
SHOOTING SYSTEMS



Contents
Officials
Champions
Schedule
Logistics
Registration
Stages
Conditions
Awards
Squadding
Map

# TOURNAMENT CONDITIONS

## RULES

The rules specified in the Official Program, Match Director Bulletins and supplemental rules defined in this section govern the 2024 NRA World Shooting Championship.

## OFFICIAL BULLETIN BOARD

The Official Bulletin Board is located outside the NRA office at the MTF building #40181.. It is the responsibility of the competitor to check the Official Bulletin Board for preliminary bulletins, official notices, and scores. Scores will be available on-line at [wsc.nra.org](http://wsc.nra.org) and on Practiscore.

## SAFETY

A competitor abandons a firearm when the firearm is left in a designated container or table and hands removed. All firearms must be in a safe condition before shooter abandons or grounds them. Competitors may not retrieve or reuse a firearm once abandoned.

A safe firearm condition is one that has an empty chamber, the magazine removed, and the action open. A safe grounded firearm may have the action closed but must have the safety on or be empty. If the firearm is a revolver, the cylinder must be open and all chambers empty. If anything, other than these conditions exists, Championship Officials consider the firearm loaded.

All firearms will have an Empty Chamber Indicator inserted while on the preload table or rack. This will be removed upon the RO's guidance or in the designated safe areas if the stage has one.

## SAFE AREA

Competitors may handle firearms in the designated Safe Area where clearly marked.

## MEDICAL EMERGENCY

Report any medical emergency immediately to Championship Officials or range personnel.

## EYE AND EAR PROTECTION

Any person in and around the firing line must wear eye and ear protection.

# Baron Engraving



***Creatively elevating products and  
adding lasting value for more than 40 years!***

**Visit [baronengraving.com](http://baronengraving.com)**



**CONDUCT**

Good sportsmanship, professionalism, and safety are important principles of the shooting sports and are requirements for attendance and participation in the Championship. Championship Officials will instruct any person who is unable to act accordingly to leave the range. This may lead to disqualification of that person from further participation in the Championship as well as its associated events.

The NRA reserves the right, at its sole determination, to remove competitors, guests, staff and/or spectators for unsafe or unsportsmanlike conduct at any time during the event."WITHOUT Refund.

**DRESS CODE**

An article of clothing, which insures the comfort and safety of all competitors and range personnel, is mandatory. Attire worn during all phases of the Championship will be in good taste and appropriate. No person will wear articles of clothing with controversial or offensive slogans, or illustrations. The Match Director may take whatever action is necessary to maintain acceptable clothing standards.

Competitors will wear the competitor bib number provided in the competitor packet on their shirt back, in full view while competing in the Championship. The competitor forfeits assigned time slots for any stage in which the bib number is not in full view.

Casual attire is appropriate for the NRA World Shooting Championship award ceremony.

**COACHING**

The stages in this Championship are individual in nature. Competitors may not coach or assist another competitor while they are actively engaged in a course of fire.

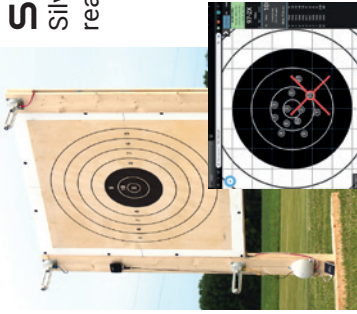
**WEATHER**

The Match Director may cancel, extend, or alter the course of fire due to inclement weather or for any other reason considered worthy. If necessary, weather delays will occur in 15-minute intervals. Match staff will announce when the weather delay lifts. It is the competitor's responsibility to remain near the stage ready to resume competing. The NRA also reserves the right to reschedule, cancel or



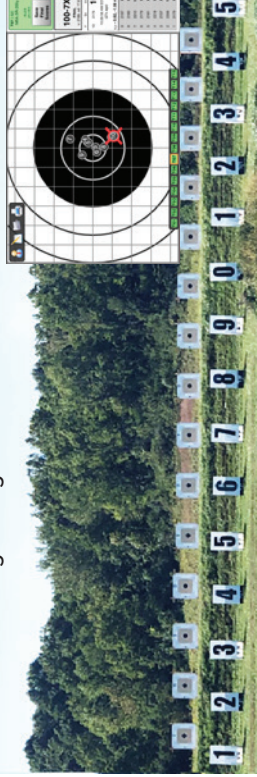
# SOLO

a new generation of electronic target



## SOLO, a Revolutionary Design

Silver Mountain Targets brings the technology of an E-target within reach of the multi-target range or individual shooter.



SOLO Stand-Alone System

SOLO Multi-Target Range System

## A Leader in Open Sensor Rifle Target Systems

Dave@SilverMountainTargetsUSA.com Silver Mountain Targets USA, Crawfordsville, IN 47933  
SilverMountainTargetsUSA.com

© 2024 All Rights Reserved

to delay the World Shooting Championship for a period of one or more days in the event of severe weather. Competitors will need to remain ready to resume the championship after the severe weather has passed.

## CONCEALED CARRY

Camp Atterbury is an active base and therefore no concealed carry is allowed while on the installation.

## FIREARMS AND EQUIPMENT

Match staff will provide firearms, optics, and ammunition for use at each stage. Competitors may not reconfigure any firearm during the event. Competitors may not use any additional shooting equipment not included in the stage design to include blinders, shooting gloves, and slings. However, competitors may wear shooting pants with internal knee padding or bring their own knee pads. Match staff will provide ground cover or shooting mats when applicable.

## START POSITIONS

It is the competitor's responsibility to assume the correct start position before firing commences and to maintain a proper firing position on any stage throughout the Championship. Each stage brief will clearly define the start position of the competitor and the firearm, which may include in the competitor's hands, at low ready or port arms.

Pistols, rifles, and shotguns with external safeties will begin the stage with the safety in the "safe" position. Pistols that are double action, double action only and revolvers will begin the stage with the hammer down.

## SCORING

Competitors will compete in twelve (12) unique disciplines with unique scoring systems. In some cases, the written stage brief will include modifications to the discipline scoring guidelines.

Match staff will score all stages using an electronic scoring device equipped with Practiscore. Competitors may review their targets and score. If in agreement with their score, competitors will sign on the electronic scoring device by clicking "save" at the bottom of the screen. The signing of a competitor's score by match staff or the competitor shall not be a final act. The signing of a score will not be relief from further penalties or disqualification should Match Officials deem it necessary.

There are two (2) types of scoring stages:

**Time Plus:** For these stages, a competitor's individual score

equals time plus penalties. The competitor's match points equal their score divided by the first-place stage winner's score.

**Points:** For these stages, a competitor's individual score equals the total number of scoring hits per stage design such as clays or targets with scoring rings valued 5 to 10 and X. A competitor's score is determined by adding the points on the target. A competitor cannot incur a failure to engage penalty but may incur excessive rounds and over time penalties.

## PAPER TARGETS

In stages using paper targets, match staff will change targets according to discipline rules or as needed. All fired targets will be the property of the Championship. Competitor's may not remove or retain fired targets.

Any hole, which touches a scoring ring or perforation, will earn the higher point value. Only holes made by projectiles that pass completely through the target and backer will count for score. Evidence that the projectile made the hole must be present on the target (i.e. crown, grease ring or mark). Holes made by shrapnel, fragments, wads, or flying debris will not count for score or penalty. Shoot through's will not count for score.

## FALLING STEEL

Calibration of falling targets will occur prior to the start of the event and as needed per CRO. Steel must fall to score. Swinging or flashing targets must react in the manner prescribed in the stage briefing. Match staff may call hits.

## STATIC STEEL

Match staff will call "hit" as appropriate where static steel is in use on the stage. Competitor may ask the RO if they hit the target.

## FRANGIBLE TARGETS

Frangible targets (e.g. clay pigeons) must break by gunfire to score. When any piece visibly detaches from the target, the competitor scores a "hit" and the target is "broken." If the target did not break or was not engaged the competitor incurs loss of points on the stage.

## PENALTIES

**No Shoots:** If a competitor shoots a designated "No Shoot" target, that competitor will incur a penalty as per stage brief..

**Failure to Follow Procedure:** If a competitor fails to follow the procedure detailed in the stage brief, that competitor will incur a 10 second or 10 point penalty. In the event a competitor gains a competitive advantage for the act, “per shot” penalties may apply as determined by the stage CRO, Area Director or Match Director.

**Grounding:** If a competitor fails to ground a firearm in the designated container, that competitor will incur a 20-second (or point) penalty per occurrence.

**Par Time:** If a competitor fails to complete a stage within the par time of 180 seconds, the stage will score as shot and that competitor will incur all applicable miss and failure to engage penalties per discipline rules. Time will be recorded as of the last shot fired.

**Interference:** If a competitor touches a target after completing a course of fire and prior to the scorer announcing its score, that competitor will receive 0 points for the touched target.

**Failure to Engage:** If a competitor fails to engage a target in a Time-Plus stage, that competitor will incur a 30-second (or point) penalty per occurrence.

**Dropped Firearm:** If a competitor drops an unloaded firearm at any time, that competitor will incur a 30-second penalty for that stage. If a Competitor drops a loaded firearm the Competitor will be disqualified.

**Start Position:** If it is determined by the Match Director that a competitor started a stage in a position other than that as stated in the stage description, that competitor will incur a procedural penalty. If the position gives the competitor a competitive advantage, that competitor will incur a 60 second or 60 point penalty. Either penalty will apply even if the competitor receives a reshoot.

TIES

In the event of a tie in the final overall score, the Statistical Office will break ties using the competitor’s scores from the stages in sequential order from Stage 1 through Stage 12 as necessary until the tie is broken.

SCORING CHALLENGE

Competitors must make scoring challenges before signing their scorecard, paper or electronic. The Match Director’s decision is final. The procedure for challenging a score is as follows: Discuss with CRO. If the result still is not settled



then the Area director report to the area. All information from range and scoring will be taken into consideration and a decision will be made. If there is still a question the competitor will be moved aside and the CRO will continue with the stage. The Area director will call the Match director over who will make the final decision. There are NO formal appeals beyond the match director. The match director will make the final decision on scoring related or match related disqualifications or match related issues. The match director or match executive may also disqualify a competitor for unsportsmanlike or reprehensible acts of conduct.

## **EQUIPMENT CHALLENGE**

A competitor may not challenge more than three (3) firearms during the Championship. The procedure for challenging firearms or optics is as follows:

- Competitors select and use the provided firearm(s) for each stage. Once a competitor selects the firearm(s) for use on a stage, the competitor must use that firearm for practice or sighted shots, if allowed.
- A competitor may challenge the accuracy of that firearm during or immediately after the competitor completes their practice or sighted shots.
- If a competitor challenges the firearms accuracy, the CRO on that stage or appropriate match personnel approved by the Match Director will test that firearm for function and accuracy.
- Until the CRO or approved match personnel determine the function and accuracy of that firearm, the competitor who challenges firearms will move off the stage and return to the squad at a time in which the CRO or Match Director selects.
- If the CRO or approved match staff determine the firearm functions properly and accurately, then the challenging competitor will use that firearm on the stage without additional practice or sighted shots.
- If the CRO or approved match personnel determine the firearm does not function properly or accurately, then the challenging competitor will select a new firearm for the stage and proceed with the practice or sighted period. If a competitor objects to the function or accuracy of a firearm during or after completing a course of fire, that competitor may not reshoot the stage unless they elect to use a Mulligan Card.

## **MULLIGAN CARD**

The Mulligan Card allows a competitor to reshoot a stage.

They are available for purchase during Registration and at the Statistical Office prior to the start of the Championship. Amateurs will receive one (1) free Mulligan card in their registration packet. Professional competitors may not Purchase more than one (1) Mulligan Card.

The competitor must call for a Mulligan prior to the first shot of the next competitor on that stage. When a competitor calls for a Mulligan, the CRO will verify the name printed on the card belongs to the competitor. The CRO will retain the card and turn it in to the Statistical Office that day. If the competitor fails to call for a Mulligan prior to the next competitor firing, then the competitor loses the opportunity to reshoot the stage. The second score will stand even if the score prior to using the Mulligan Card is higher.

Competitors who commit a safety violation that results in disqualification may not use the Mulligan Card to reshoot the stage. Mulligan cards are non-transferrable. Mulligan Cards have a (1) one-time use.

SUPPLEMENTAL RULES

The Match Director may reference the rulebooks below to make a ruling. Once the Match Director makes a ruling, it shall set the precedence for the remainder of the event.

The Match Director shall exercise good judgment in ruling for the best interest of the shooting sports and competitors. All decisions regarding match rules are at the sole and final determination of the NRA.

- USPSA Rulebook
- NRA Action Pistol Rulebook
- NRA Pistol Rulebook
- SASS
- NRA Smallbore Rifle Rulebook
- FNH USA 3 Gun Championship Rules
- PRS Rules

DISQUALIFICATION

The NRA anticipates hosting an event free from disqualifications. However, due to the need for safety for all persons on the ranges and the need for fairness in competition, disqualification measures must be in place.

The Chief Range Officer of any event, the Area Director of any area, and the Match Director may disqualify any competitor. The Match Director retains final approval authority over any disqualification. The match executive may also disqualify any competitor for unsportsmanlike

or reprehensible behavior at any time during the event to include times where shooting is not occurring. Any disqualification from the tournament also results in forfeiture of entry fees.

### **Match DQ**

- A shot that travels over a backstop or berm.
- A shot that strikes the ground within 10 feet of the competitor, spectators, or match staff.
- A shot that occurs while loading, reloading, or unloading a handgun while in prep or after completion of a stage.
- If at any time a competitor allows the muzzle to pass beyond a predetermined, designated or otherwise marked barrier indicating an unsafe direction, pass the 180-degree plane of the firing line, or in any direction deemed by match staff to be unsafe whether loaded or unloaded.
- A dropped firearm, loaded, at any time during the twelve (12) Championship stages and any side match events.
- Allowing the muzzle of a firearm to point at any part of the competitor's body while on a stage (i.e. sweeping).
- Handling live or dummy ammunition (including practice or training rounds, snap caps, and empty cases), loaded magazines or loaded speed loading devices in a designated Safe Area.
- Having a loaded firearm other than when under the direction and supervision of match staff.
- No firearm may contain or have attached any ammo or simulated ammo of any kind in the safe area.
- Any act of "improper gaming" to include any effort to gain an unfair advantage by not engaging all targets presented on a course of fire.
- Improper use of a Mulligan card.
- Any disruptive behavior toward any competitor, match official, match staff or NRA staff, or displays of poor sportsmanship at any time.
- Cheating, altering targets prior to scoring, dishonesty, failing to comply with the reasonable directions of match staff or any behavior likely to bring the sport into disrepute.
- Entering the Championship in an improper division.
- Alcoholic beverages during the Championship
- Non-prescription drugs
- Narcotic substances

### **Stage DQ**

- Failure to ground firearm (s) in a safe condition
- Carrying or possessing an uncased firearm with the action closed, except when on the firing line

AWARDS

AWARD DISTRIBUTION

The NRA has SOLE DETERMINATION of awards and will make the final decision regarding all awards, disputes or award inquiry

In the spirit of “Good Sportsmanship,” competitors must be present at the Awards Ceremony to accept awards or prizes; no competitor may claim a prize on another’s behalf. Citizens of any country may win the Championship, except by those whose countries restrict participation and wining their Championship to their own citizens.

All winners must sign for awards and or prizes and receive official redemption documentation. Competitors shall forfeit any award and or prize by failing to claim them at the Awards Ceremony; the award then becomes the property of the NRA. No shipping of prizes will occur after the conclusion of the Championship except for checks and firearms. Firearms certificates are not transferable!

The NRA and Championship Officials shall assume no responsibility whatsoever for the transfer or transportation of any award, for the legal compliance of such transfer or transport, or for the loss, theft, or damage to same. The winners, US Citizens and International, shall be solely responsible for all fees related to the transfer of any awards or prizes, included but not limited to license fees, transfer fees, handling fees, background fees, and shipping fees. The handling of all awards and prizes will have reasonable security.

AWARD PROCEDURES

Amateur competitors are not eligible for cash awards. The Awards Ceremony will have one (1) prize table each for Professional, Amateur, and Match Staff competitors. The master of ceremonies will invite competitors by name to the prize table. A \$1,000 stage winner award will be granted to the winner of each stage in the PRO Division ONLY. Additional prizes MAY be given at the SOLE determination or the NRA.

MONETARY AWARDS

NRA will mail checks from NRA headquarters in Fairfax, VA after the conclusion of the Championship. International competitors will receive cash awards less 30% tax to the IRS. International competitors will be responsible for paying the 30% tax when collecting merchandise from the prize table.

FIREARMS

Competitors must provide their name, address, phone number, current copy of their preferred FFL holder, and shipping fees no later than May 6, 2024. Winners can provide this information to NRA HQ starting April 9, 2024 by email to comphelp@nrahq.org if FFL is not available on awards ceremony night. The competitor must pay for actual shipping costs, plus \$30 for materials, transfer and handling

of firearms. Firearms will ship with insurance and adult signature required direct to the FFL holder of the competitor's choice.

International competitors and junior competitors are not eligible for firearm(s) prizes. It is the responsibility of the competitor to select firearm(s), magazine(s), and accessories that are legal in that competitors state of residence. **Competitors may not sell or trade firearm awards prior to receiving their prize.**

**TAX REQUIREMENTS**

The NRA continually strives to achieve full compliance with all tax laws and regulations. NRA Financial Services conducts a review of all NRA competitions where a tax event might occur. A tax event occurs when a competitor wins a total amount of at least \$600 in cash or merchandise in a calendar year regardless of age. The NRA will set the estimated value of all prizes, awards, firearms and/or optics etc. All prizes and award estimated amounts are FINAL and not open to debate. **If a competitor claims a prize or award of any form, the competitor accepts the taxable value of the award as assigned to the award by the NRA.** No disputes will be accepted over any fair market values assigned.

Those competitors will receive an IRS Form 1099-Misc from NRA Financial Services. Should you have questions please call NRA Finance at 703.267.1652. This can be done through the new Shooters Portal at <https://competitor.nra.org/> after registering for an account and signing up for a match.

Competitors must submit a completed and subsequently validated IRS Form W-9 (US Citizens) and IRS W-8 BEN (International) upon entry into the Championship to be eligible for awards or prizes. Competitors may not submit IRS forms after the close of registration. Competitors may Opt-Out of submitting a W-9 or W-8. If a competitor opts-out, that competitor will forfeit all monetary and prize table awards for the Championship. The W-9 Opt-Out selection is irreversible.

**AWARD BANQUET**

There will be limited seating for the awards banquet. Competitors will have priority over seating.

**AWARD SCHEDULE**

Champion	\$25,000	Title of "World's Greatest Shooter"
2nd	\$2,000	+Prize Table – Pro
3rd	\$1000	+Prize Table – Pro
High Lady	\$2,000	+Prize Table – Pro
High Junior	\$1,000	+Prize Table – Am or Pro
Stage Winner	\$1,000	Pro Division
Amateur	Prize Table – Amateur	
Staff	Prize Table – Staff	



Contents
Officials
Champions
Schedule
Logistics
Registration
Stages
Conditions
Awards
Squadding
Map

# SQUADDING MATRIX

## Championship, Day 1

### STAGES 1 - 4

Time	Stage 1	Stage 2	Stage 3	Stage 4
7:00 AM	101	102	103	104
8:30 AM	104	101	102	103
10:00 AM	103	104	101	102
11:30 AM	102	103	104	101
1:00-1:45	LUNCH			
2:00 PM	201	202	203	204
3:30 PM	204	201	202	203
5:00 PM	203	204	201	202
6:30 PM	202	203	204	201

### STAGES 5 - 8

Time	Stage 5	Stage 6	Stage 7	Stage 8
7:00 AM	105	106	107	108
8:30 AM	108	105	106	107
10:00 AM	107	108	105	106
11:30 AM	106	107	108	105
1:00-1:45	LUNCH			
2:00 PM	205	206	207	208
3:30 PM	208	205	206	207
5:00 PM	207	208	205	206
6:30 PM	206	207	208	205

### STAGES 9 - 12

Time	Stage 9	Stage 10	Stage 11	Stage 12
7:00 AM	109	110	111	112
8:30 AM	112	109	110	111
10:00 AM	111	112	109	110
11:30 AM	110	111	112	109
1:00-1:45	LUNCH			
2:00 PM	209	210	211	212
3:30 PM	212	209	210	211
5:00 PM	211	212	209	210
6:30 PM	210	211	212	209



TAURUS  
**GX4**  
CARRY

# THE ULTIMATE CARRY GUN.

FOR THE ULTIMATE  
EDC ENTHUSIAST.

OPTIC-READY  
TORO SLIDE

INTERCHANGEABLE  
BACKSTRAPS

9MM,  
15-ROUND  
CAPACITY

PICATINNY RAIL

RELY ON  TAURUS®

TaurusUSA.com

Contents
Officials
Champions
Schedule
Logistics
Registration
Stages
Conditions
Awards
Squadding
Map

# SQUADDING MATRIX

## Championship, Day 2

### STAGES 1 - 4

Time	Stage 1	Stage 2	Stage 3	Stage 4
7:00 AM	209	210	211	212
8:30 AM	212	209	210	211
10:00 AM	211	212	209	210
11:30 AM	210	211	212	209
1:00-1:45	LUNCH			
2:00 PM	109	110	111	112
3:30 PM	112	109	110	111
5:00 PM	111	112	109	110
6:30 PM	110	111	112	109

### STAGES 5 - 8

Time	Stage 5	Stage 6	Stage 7	Stage 8
7:00 AM	201	202	203	204
8:30 AM	204	201	202	203
10:00 AM	203	204	201	202
11:30 AM	202	203	204	201
1:00-1:45	LUNCH			
2:00 PM	101	102	103	104
3:30 PM	104	101	102	103
5:00 PM	103	104	101	102
6:30 PM	102	103	104	101

### STAGES 9 - 12

Time	Stage 9	Stage 10	Stage 11	Stage 12
7:00 AM	205	206	207	208
8:30 AM	208	205	206	207
10:00 AM	207	208	205	206
11:30 AM	206	207	208	205
1:00-1:45	LUNCH			
2:00 PM	105	106	107	108
3:30 PM	108	105	106	107
5:00 PM	107	108	105	106
6:30 PM	106	107	108	105

**SQUADDING MATRIX**  
**Championship, Day 3**

**STAGES 1 - 4**

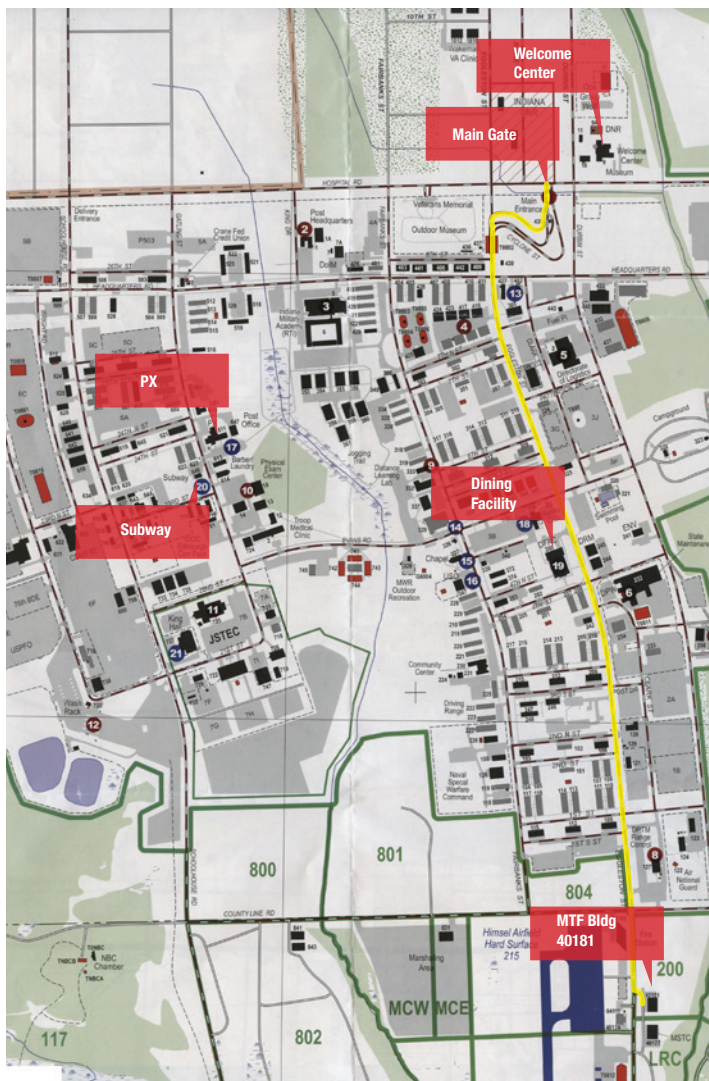
Time	Stage 1	Stage 2	Stage 3	Stage 4
7:00 AM	105	106	107	108
8:30 AM	108	105	106	107
10:00 AM	107	108	105	106
11:30 AM	106	107	108	105
1:00-1:45	LUNCH			
2:00 PM	205	206	207	208
3:30 PM	208	205	206	207
5:00 PM	207	208	205	206
6:30 PM	206	207	208	205

**STAGES 5 - 8**

Time	Stage 5	Stage 6	Stage 7	Stage 8
7:00 AM	109	110	111	112
8:30 AM	112	109	110	111
10:00 AM	111	112	109	110
11:30 AM	110	111	112	109
1:00-1:45	LUNCH			
2:00 PM	209	210	211	212
3:30 PM	212	209	210	211
5:00 PM	211	212	209	210
6:30 PM	210	211	212	209

**STAGES 9 - 12**

Time	Stage 9	Stage 10	Stage 11	Stage 12
7:00 AM	101	102	103	104
8:30 AM	104	101	102	103
10:00 AM	103	104	101	102
11:30 AM	102	103	104	101
1:00-1:45	LUNCH			
2:00 PM	201	202	203	204
3:30 PM	204	201	202	203
5:00 PM	203	204	201	202
6:30 PM	202	203	204	201



# SQUADDING MATRIX

## Side Matches

### DAY 1

Time	Side Match 1	Side Match 2	Side Match 3	Side Match 4
7:00 AM	201	202	203	204
8:15 AM	204	201	202	203
9:30 AM	203	204	201	202
10:45 AM	202	203	204	201
12:00 PM		204		209
1:15 PM		LUNCH		
2:30 PM	104	109	110	105
3:45 PM	101	102	103	108
5:00 PM	103	101	102	107
6:15 PM	102	103	101	106

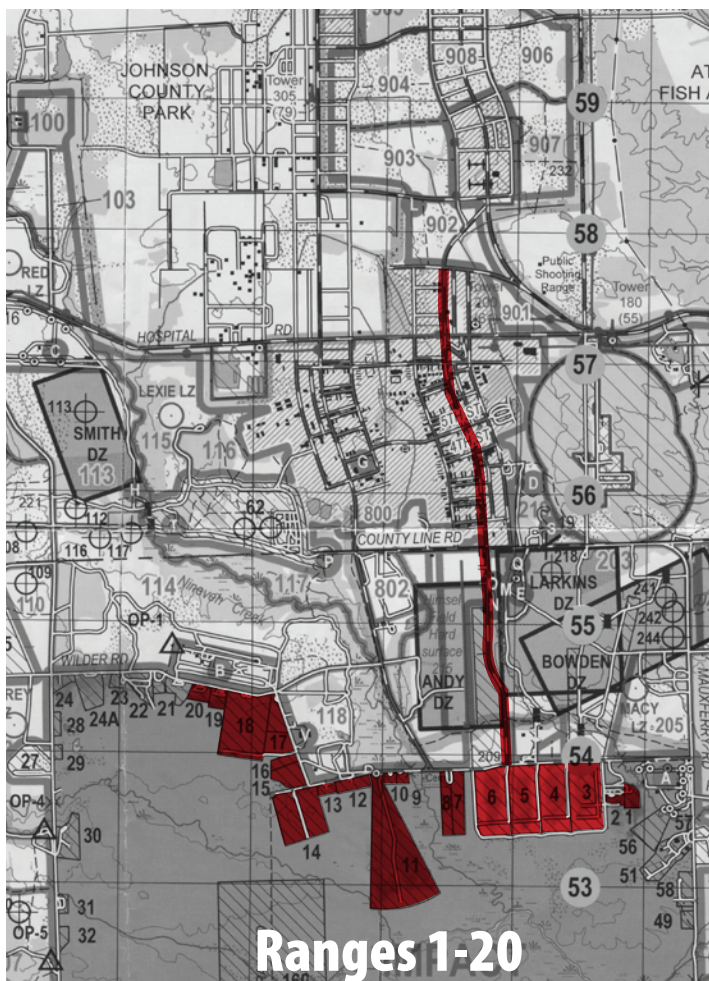
### DAY 1

Time	Side Match 5	Side Match 6	Side Match 7
7:00 AM	206	207	208
8:15 AM	208	205	206
9:30 AM	208	205	206
10:45 AM	207	208	205
12:00	210	211	212
1:15		LUNCH	
2:30 PM	106	107	108
3:45 PM	105	106	107
5:00 PM	108	105	106
6:15 PM	107	108	105

### DAY 2

Time	Side Match 1	Side Match 2	Side Match 3	Side Match 4
7:00 AM	110	111	109	101
8:15 AM	109	110	111	104
9:00 AM	111	112	105	103
10:15 AM	112	105	106	102
11:00 AM	105	106	112	
12:15-2:00		LUNCH		
2:15 PM	205	206	207	209
3:00 PM	207	205	206	212
4:15 PM	206	207	205	211
5:00 PM	208		204	210





SQUADDING MATRIX

Side Matches

DAY 2

Time	Side Match 5	Side Match 6	Side Match 7
7:00 AM	102	103	104
8:15 AM	101	102	103
9:00 AM	104	101	102
10:15 AM	103	104	101
11:00 AM			
12:15-2:00	LUNCH		
2:15 PM	210	211	212
3:00 PM	209	210	211
4:15 PM	212	209	210
5:00 PM	211	212	209

DAY 3

Time	Side Match 1	Side Match 2	Side Match 3	Side Match 4
7:00 AM	210	208	209	201
8:15 AM	209	210	208	204
9:00 AM	211	212	213	203
10:15 AM	213	211	212	202
11:00 AM	212	213	211	
12:15-2:00	LUNCH			
2:15 PM	106	104	107	109
3:00 PM	107	108	104	112
4:15 PM		107	108	111
5:00 PM	108			110

DAY 3

Time	Side Match 5	Side Match 6	Side Match 7
7:00 AM	202	203	204
8:15 AM	201	202	203
9:00 AM	204	201	202
10:15 AM	203	204	201
11:00 AM			
12:15-2:00	LUNCH		
2:15 PM	110	111	112
3:00 PM	109	110	111
4:15 PM	112	109	110
5:00 PM	111	112	109

## Camp Atterbury Safety Briefing

- While aboard the installation there are a few things that you will need to know!
- This is an active base therefore you will encounter military traffic and troops.
- Speed limits are 25mph and 10mph while passing troops.
- Do not proceed pass Range control or the flight tower without a vehicle pass from the NRA!
- This will be done at the MTF building 40181 when you check in.
- If there is a gate or barricade over the road DO NOT drive around it.
- Never go down range unless the Range OIC or RSO, assigned by the base, tell you its safe to do so.
- Do not occupy a range unless there is a red range flag flying near the road.
- Ensure that you park in designated areas only. The ground may be soft and we don't want to have to repair any ranges after our stay.
- No firearms will be loaded other than on the line when directed by a RSO.
- No handling of firearms unless in a designated safe area
- No handling of ammunition in designated safe areas.
- Camp Atterbury is a large installation and has many activities and large equipment from large trucks to Helicopters so, stay alert! Do not drive outside of the designated routes to get you to and from the designated ranges for the competition.
- Ensure you have eye and ear protection while on anyone of our ranges during your visit.
- Remember to be safe and have fun!

# THE EASIEST WAY TO GET A SILENCER



SILENCER  
CENTRAL



NRA PUBLICATIONS  
GOLDEN  
BULLSEYE  
AWARD



FIND THE RIGHT  
SILENCER FOR YOU.



LET US HANDLE  
THE PAPERWORK.



ENJOY FRONT  
DOOR DELIVERY.

CALL **866.261.2664** OR VISIT  
**SILENCERCENTRAL.COM** TO GET STARTED!