



SEPT 30 - OCT 4, 2025

WORLD SHOOTING CHAMPIONSHIP

PRESENTED BY WALTHER



INFORMATION AT WSC.NRA.ORG

**Conducted by
The National Rifle Association of America
Held at Camp Atterbury, IN**

OFFICIAL PROGRAM



INTRODUCING THE WALTHER
PDP MATCH





**THANK YOU TO ALL OUR
2025 SPONSORS!**

THANK YOU TO OUR PRESENTING SPONSOR



National Rifle Association of America
11250 Waples Mill Rd, Fairfax, VA 22030
Competitive Shooting Division
www.nra.org



INTRODUCING THE WALTHER

PDP MATCH STEEL FRAME



PRESENTED BY



WORLD SHOOTING CHAMPIONSHIP

CHAMPIONSHIP OFFICIALS	5
PREVIOUS CHAMPIONS	7
SCHEDULE OF EVENTS	9
LOGISTICS	11
REGISTRATION	13
STAGES	17
TOURNAMENT CONDITIONS	33
AWARDS	42
SQUADDING MATRIX	45
MAP	50



Celebrating 75 Years of Rugged, Reliable Firearms®



In 2024, Ruger proudly celebrates 75 years of manufacturing rugged, reliable firearms. To commemorate this occasion, Ruger is proud to announce four 75th Anniversary Models, a Mark IV™ pistol, two different 10/22® rifles and an LCP® MAX, each representative of Ruger's storied past and bright future. These commemorative models are inspired by iconic Ruger products, and represent each of our three major manufacturing facilities.



The acquisition, ownership, possession and use of firearms are heavily regulated. Some models may not be legally available in your state or locale. Whatever your purpose for lawfully acquiring a firearm – know the law, get trained and shoot safely.



CHAMPIONSHIP OFFICIALS

Match Director

Aaron Farmer

Match Assistant

Chad Barber

Match Staff/Media Liaison

Tom Yost

Emcee

Aaron Farmer

Area Director | Stage 1 – 4 | Side Matches 1 - 3

Area Director | Stages 5 – 8 | Side Match 4

Area Director | Stages 9 - 12 | Side Match 5

Area Director | Side Match 6



WEATHERBY®

MODEL 307™

RANGE™ XP



LEARN MORE AT WEATHERBY.COM

WORLD SHOOTING CHAMPIONSHIP

PREVIOUS CHAMPIONS

2014	DANIEL HORNER
2015	BRUCE PIATT
2016	DOUG KOENIG
2017	GREG JORDAN
2018	TIM YACKLEY
2019	GREG JORDAN
2024	BRIAN SHANHOLTZ



SCHEDULE OF EVENTS

All times and locations are subject to change.

TUESDAY, SEPT 30, 2025

Location: Camp Atterbury Museum

2 pm – 6:30 pm Registration & Packet Pick Up

Location: FOB 1

7 pm – 9 pm Competitor Brief

WEDNESDAY, THURSDAY, FRIDAY
OCTOBER 1,2,3, 2025

Location: Camp Atterbury

6:30 am AM Squads Arrive at Assigned Stage

7 am Competition Begins

1 pm – 1:45 pm Staff Lunch – Range is Cold

1:45 pm PM Squads Arrive at Assigned Stage

2 pm Competition Begins

8 pm Shooting Concludes

SATURDAY, OCTOBER 4, 2025

Location: Camp Atterbury, IN. RANGE 19

6:30 am Range opens for Mystery Team Event.
Top 3 Competitors in Pro and Amateur will be team captains!

7-8:30 am Competition

9 am Doors open for Brunch and the awards ceremony at FOB1





GEAR UP!



**MAGNUM
RESEARCH®**

WWW.MAGNUMRESEARCH.COM



@magnumresearchinc



**WORLD
SHOOTING
CHAMPIONSHIP**

CAMP ATTERBURY

The Department of Defense has upgraded security at Camp Atterbury to that of an active duty military base. Everyone arriving on the base will have to be vetted. This process takes less than 5 minutes. Here is the procedure:

Monday thru Thursday, 9am to 12pm, vetting is done at the Welcome Center/Museum. This is the first building on the right, as you come down the hill, just before the main gate.

Monday thru Thursday 12p to 10p and Friday 9a to 10p vetting is done at the front gate.

If you arrive at any other time, a visitor pass will be issued at the front gate. You will be required to return the pass to the Welcome Center or Main Gate to be vetted.

Retired and Active Duty Military Personnel are exempt from this proceedure. Please show your military indentification at the Main Gate.

LOGISTICS

CHAMPIONSHIP REGISTRATION

County Road 800 S, Edinburgh, IN 46124
Welcome Center/Museum

CAMPGROUNDS AND RV'S

Campgrounds and RV's
Whitaker Place Campground

Camp Atterbury - Competitor Lodging
3008 Old Hospital Road | Edinburgh, Indiana 46124
812-526-1128

Johnson County Park
2949 East North Street | Nineveh, IN 46164
812-526-6809 | www.jocoparks.com

LODGING

MATCH HOTEL in town
Hampton Inn and Suites
361 Paris Drive, Franklin, IN 46131
Cut off date for special rate is Sept 8.

Check in at Billeting is between 2p and 4p, Monday thru Friday. Any other time, ask for you room key at the front gate.

Check out is 10am. Late check out requires prior arrangement and may incur additional charges. When checking out, leave you key at billeting or drop it in the drop box located at the front door of Billeting.

Please note:

Pets are permitted at the MWR Campground, must be on a leash at all times and owners are responsible for keeping the area clean.

Service Dogs are permitted with documentation. Documentation for Service Dogs shall be presented at Lodging when checking in. NOTE: Emotional Support animals are not recognized as service animals on Camp Atterbury.

TRAVEL

Indianapolis International Airport

7800 Col. H. Weir Cook Memorial Drive
Indianapolis, IN 46241

Columbus Municipal Airport

4770 Ray Boll Blvd. | Columbus, IN 47203
FBO, fuel, ground support

TELEPHONE INQUIRIES

Competitors are responsible for providing their own transportation to and from the range as well as securing lodging and travel to and from the Championship. For further information on interstate transportation of firearms, visit **nra.org**.

MEALS

Meals are the responsibility of the competitor.

REGISTRATION

COMPETITOR ELIGIBILITY

The NRA World Shooting Championship is open for registration to all legally permitted, responsible U.S. citizens, and legally permitted, responsible non-U.S. citizens who are members in good standing of their respective national shooting federations. Any foreign competitors must notify the NRA via email at highpower@nrahq.org as soon as registration is complete. This will allow the base to grant access to the facility..

ENTRY LIMIT

The first 288 competitors will receive entry into the Championship. Once the match is full, competitors may add themselves to the waitlist.

ENTER ONLINE

Enter the NRA World Shooting Championship at <https://competitor.nra.org>.

GUEST ENTRY

Any individual, including non-firing guests, who are present at the NRA World Shooting Championship, must register at the Registration Office or check in at the NRA HQ Office to receive an event pass.

ENTRY CHANGES

Competitors must enter the correct division. A competitor who has any changes to their entry must notify NRA staff prior to the close of registration. Division changes can occur in the Statistical Office prior to the start of the Championship. Match staff will not make changes to entries on the range.

REGISTRATION

Registration is an opportunity for competitors to mingle with match sponsors, receive competitor packets and finalize squadding. See the schedule of events for registration and packet pick details.

SQUADDING

Competitors will self-squad via Practiscore. The squadding link will be sent out via separate correspondence September 1st in practiscore. The Match

Director reserves the right to change squadding as necessary. Competitor packets will include squad sheets detailing competitor firing times and dates for the Championship and Side Matches.

Competitors will report to and remain in the staging area provided at each bay fifteen (15) minutes prior to their assigned firing time. The CRO will deliver a stage brief 15 minutes prior to the start of each stage and allow for a 10 minute walk through if applicable.



TAURUS
GX4[™]
CARRY

THE ULTIMATE CARRY GUN.

FOR THE ULTIMATE
EDC ENTHUSIAST.

OPTIC-READY
TORO SLIDE

PICATINNY
RAIL

INTERCHANGEABLE
BACKSTRAPS

9MM,
15-ROUND
CAPACITY

RELY ON  TAURUS[®]

TaurusUSA.com

REFUNDS

The NRA World Shooting Championship has a **no refund policy**. However, NRA reserves the right to issue a refund at its sole determination for documented medical emergencies. Send cancellation requests in writing via email to comphelp@nrahq.org. NRA will give consideration for extenuating circumstances.

COMPETITORS BRIEF & RULES Q&A

Competitors must attend the competitors brief after registration. See the schedule of events for details. At this time, competitors may seek clarification on events, rules, and safety practices.

DIVISIONS

Competitors may register as an individual into the Professional or Amateur division. A Professional is any individual who receives financial support over \$2,000 per year in products, cash, or services in support of competitive shooting participation. A professional is also any competitor who has placed in the “top 5” of the Amateur Category in any previous NRA World Shooting Championships (2014 - 2024). An Amateur is anyone who does not meet the definition of the “Professional.”

CATEGORIES

Competitors may register as an individual into the Lady or Junior category. An Amateur Junior is aged 12 to 17 at the start of the match.

ENTRY FEES

Professional	400
Amateur	400
Junior Amateur	325

NO MULLIGAN CARDS FOR 2025

SAR9
SUBCOMPACT GEN2

SAR
FIREARMS

CONCEALED CARRY
REDEFINED



SAR
FIREARMS

WORLD
SHOOTING
CHAMPIONSHIP

STAGES

NRA WORLD SHOOTING CHAMPIONSHIP

The NRA World Shooting Championship is a Squadded Individual Match that consists of twelve (12) fired events, which occur over three (3) days.

Note: No one is allowed on the ranges to preview stages until 1st day of firing.

Stage 1	Precision Standing Air Gun
Stage 2	Sporting Clays
Stage 3	NRA Precision Pistol
Stage 4	NRA America's Rifle Challenge LVL 2
Stage 5	FITASC
Stage 6	NRA ARC 2-Gun
Stage 7	PRS Rimfire
Stage 8	Biathlon
Stage 9	IDPA
Stage 10	SASS
Stage 11	PRS
Stage 12	USPSA
Side Match 1	Steel Blast
Side Match 2	TX .22 Bout
Side Match 3	Back Country Steel
Side Match 4	Sliders Away
Side Match 5	Walther Experience (not for score)
Side Match 6	NRA ARC Lvl 1
Team Shoot	Mystery Team Shoot, Winner take all!

FOSTECH

ONE OF THE LIGHTEST
AR-15'S ON THE MARKET TODAY!



FEATURES

- FOSTECH LIGHTWEIGHT STEALTH LOWER & UPPER RECEIVER
- APPROXIMATE WEIGHT 4.93 LBS
- 2.23 / 5.56 / .22LR / .300 BLK
- 16" FAXON GUNNER BARREL
- FOSTECH MACH 1 16" RAIL
- FOSTECH LOW MASS BCG
- FOSTECH SABRE COMFORT GRIP
- FOSTECH ANTI WALK PINS
- TRIGGER OPTIONS: ECHO AR II, ECHO SPORT, OR SINGLE STAGE
- FOSTECH TOMAHAWK STOCK
- (1) 30 ROUND MAGAZINE
- PLASTIC CARRY CASE



WWW.FOSTECH.COM

STAGE 1 SPONSOR

Air Rifle
Ammunition
Course of fire
Targets
Scoring Type
Par Time
Learn More

PRECISION AIR RIFLE STANDING Walther

Walther LG400 Blutec
Pellets
10 Meter 10rnds
AR/5 10
Points
12min
Walther Arms:
Explore Our Exceptional Handguns
<https://waltherarms.com/>

STAGE 2 SPONSOR

Shotgun
Ammunition
Thrower
Course of fire
Targets
Scoring Type
Par Time
Supporting
Sponsors

SPORTING CLAYS Samson MFG

Rio 12ga 2 3/4", 1 1/8oz 1300fps #7.5
Promatic
Static
Frangible
Hits
No

Promatic, Hi-Viz
<https://cz-usa.com/>

STAGE 3 SPONSOR

Pistol
Ammunition
Course of fire
Targets
Scoring Type
Par Time
Learn More

NRA PRECISION PISTOL CZ-USA

(Pistol) Shadow 2 Target
B8
Points
15 min
Learn More:
<https://www.samson-mfg.com/>

Contents

Officials

Champions

Schedule

Logistics

Registration

Stages

Conditions

Awards

Squadding

Map

STAGE 4

SPONSOR

Rifle

Optic

Ammunition

Course of fire

Targets

Scoring Type

Par Time

Learn More

NRA AMERICA'S RIFLE CHALLENGE LEVEL 2 FOSTECH

5.56

Field Course

Mixed Steel and Paper

Time Plus

180 sec

Sport: <https://arc.nra.org/>

Rifle: <https://fostech.com/>

STAGE 5 SPONSOR

Shotgun

Ammunition

Course of fire

Targets

Scoring Type

Par Time

Learn More

FITASC Weatherby

Orion Over Under

Rio 12ga 2 3/4", 1oz 1250fps #7.5

Field Course

Frangible

Hits

No

<https://weatherby.com/>

STAGE 6 SPONSOR

Rifle

Pistol

Ammunition

Course of fire

Targets

Scoring Type

Par Time

Learn More

NRA ARC 2 GUN LWRC, SAR

IC-MkII

SAR9 Sport

PMC 55gr 5.56, PMC 115gr 9mm

Field Course

Mixed Steel and Paper

Time Plus

180 Sec

Sport: <https://arc.nra.org/>

Rifle: <https://www.lwrci.com/>

Pistol: <https://sarusa.com/>

Contents

Officials

Champions

Schedule

Logistics

Registration

Stages

Conditions

Awards

Squadding

Map

STAGE 7 SPONSOR

Rifle
Optic
Ammunition
Course of fire
Targets
Scoring Type
Par Time
Learn More

PRS RIMFIRE Ruger

Precision
Steel
Steel
120 Sec
Sport: <https://nrl22.com/>
Rifle: <https://www.ruger.com/>

STAGE 8 SPONSOR

Rifle
Optic
Ammunition
Course of fire
Targets
Scoring Type
Par Time
Learn More

BIATHLON Magnum Research

MLR22AT Switchbolt
Vortex Venom Red Dot
CCI Mini Mag 40gr
Field Course
Adjustable Plate Rack
Time Plus
120 Sec
Magnum Research, Inc. | Desert Eagle
pistols and BFR revolvers , Vortex Optics -
Home
Sport: <https://www.usbiathlon.org/>
Rifle: <https://www.magnumresearch.com/>

STAGE 9 SPONSOR

Pistol
Ammunition
Course of fire
Targets
Scoring Type
Par Time
Learn More

IDPA Canik

Rival Competition-S
Federal 9mm 115gr
Field Course
Mix Paper and Steel
Time Plus
120 Sec
Sport: <https://www.idpa.com/>
Pistol: <https://www.canikusa.com/>

Contents

Officials

Champions

Schedule

Logistics

Registration

Stages

Conditions

Awards

Squadding

Map

**STAGE 10
SPONSOR**

Rifle
Pistol
Ammunition
Course of fire
Targets
Scoring Type
Par Time
Learn More

**COWBOY ACTION
Ruger, Taurus**

Marlin Lever Action
Deputy
.38spl
Field Course
Steel
Time Plus
120 Sec
Sport: <https://www.sassnet.com/>
Rifle: <https://www.marlinfirearms.com/>
Revolver: <https://www.taurususa.com/revolvers/single-action>

**STAGE 11
SPONSOR**

Rifle
Optic
Ammunition
Course of fire
Targets
Scoring Type
Par Time
Learn More

**PRS
Daniel Defense**

Delta 5 Pro
6.5 Creedmoor
Field Course
Steel
Time Plus
120 Sec
Sport: <https://www.precisionrifleseries.com/>
Rifle: <https://danieldefense.com/>

**STAGE 12
SPONSOR**

Pistol
Ammunition
Course of fire
Targets
Scoring Type
Par Time
Learn More

**USPSA
Walther**

PMC 9mm 115gr
Field Course
Mix Paper and Steel
Time Plus
120 Sec
Walther Arms: Explore Our Exceptional Handguns
Sport: <https://uspsa.org/>
Handgun: <https://waltherarms.com/>

CANIK

SUPERIOR FIREARMS

FORGED

FOR SUPERIORITY

SFX RIVAL-S



SFX RIVAL-S<sup>DARK
SIDE</sup>

FOLLOW@CANIKUSA :



CANIKUSA.COM

SIDE MATCH 1 SPONSOR

Steel Blast MOSSBERG

Rifle	JM940
Optic	
Pistol	
Ammunition	12GA
Course of fire	Field Course
Targets	Steel
Scoring Type	Time Plus
Par Time	60 Sec
Learn More	

SIDE MATCH 2 SPONSOR

TX .22 Bout TAURUS

Pistol	Taurus TX-.22
Optic	
Pistol	
Ammunition	.22
Course of fire	Field Course
Targets	Mix Paper and Steel
Scoring Type	Time Plus
Par Time	90 Sec
Learn More	Taurus USA - Award Winning Pistols & Revolvers

SIDE MATCH 3 SPONSOR

Back Country Steel HENRY

PCC	Henry Homesteader
Ammunition	PMC .9mm
Course of fire	Field Course
Targets	Mix Paper and Steel
Scoring Type	Time Plus
Par Time	90 Sec
Learn More	

Contents

Officials

Champions

Schedule

Logistics

Registration

Stages

Conditions

Awards

Squadding

Map



RED WHITE & PEW

What's more American than the crack of a 22 and the ring of steel? The satisfaction of putting your name on the leaderboard and food on the table? CCI® makes it all happen with the best rimfire loads in every category—and we've been doing it since 1951.

Proudly made in the USA.



LEARN MORE AT
cci-ammunition.com

THE LEADER IN RIMFIRE AMMUNITION®

© 2024 CCI Ammunition

SIDE MATCH 4 SPONSOR

Sliders Away KELTEC

Pistol	Sub 2000 Gen 3
Ammunition	PMC 9mm 115gr
Course of fire	Field Course
Targets	Steel
Scoring Type	Time Plus
Par Time	60 Sec
Learn More	American Firearm Manufacturer of Pistols, Rifles & Shotguns KelTec (keltecweapons.com) Targets: https://www.gttargets.com/ Rifles: https://www.keltecweapons.com/

SIDE MATCH 5 SPONSOR

Walther Experience WALTHER

Firearms	Per Walther
Course of fire	Field Course
Targets	Mix Papper and Steel
Scoring Type	Not for Score / Own stage
Par Time	180 sec
Learn More	Walther Arms: Explore Our Exceptional Handguns https://waltherarms.com/

SIDE MATCH 6 SPONSOR

NRA ARC Level 1 KELTEC

Rifle	SRO AR15 16"
Ammunition	Federal .223 GM 69
Course of fire	Static
Targets	Paper and Steel
Scoring Type	Time Plus
Par Time	4-60 Sec
Learn More	Sport: https://arc.nra.org/ Rifle: https://www.keltecweapons.com/

Contents

Officials

Champions

Schedule

Logistics

Registration

Stages

Conditions

Awards

Squadding

Map

Contents

Officials

Champions

Schedule

Logistics

Registration

Stages

Conditions

Awards

Squadding

Map

TEAM EVENT MYSTERY TEAM SHOOT
SPONSOR WALTHER, MOSSBERG, LWRC

Pistol	PDP
Ammunition	PMC 9mm 115gr
Rifle	Tech Stryker Rifle
Ammunition	Federal 5.56
Shotgun	JM940
Ammunition	12GA
Course of fire	Field Course
Targets	Steel
Scoring Type	Time Plus

This event will be run based off the finals from the night before! Top 3 pro's and top 3 amateur's will be selected as team captains. They will choose 2 members from their division to fill out their team. On Saturday morning a total of 6 teams will compete with the fastest team overall being crowned the winners and taking home a prize!

TOURNAMENT CONDITIONS

RULES

The rules specified in the Official Program, Match Director Bulletins and supplemental rules defined in this section govern the 2025 NRA World Shooting Championship.

OFFICIAL BULLETIN BOARD

The Official Bulletin Board is located outside the NRA office at the FOB building. It is the responsibility of the competitor to check the Official Bulletin Board for preliminary bulletins, official notices, and scores. Scores will be available on-line at wsc.nra.org and on Practiscore.

SAFETY

A competitor abandons a firearm when the firearm is left in a designated container or table and hands removed. All firearms must be in a safe condition before shooter abandons or grounds them. Competitors may not retrieve or reuse a firearm once abandoned.

A safe firearm condition is one that has an empty chamber, the magazine removed, and the action closed with an **Empty Chamber Indicator (ECI) inserted**. A safe grounded firearm may have the action closed but must have the safety on or be empty. If the firearm is a revolver, the cylinder must be open and all chambers empty. If anything, other than these conditions exists, Championship Officials consider the firearm loaded.

All firearms will have an Empty Chamber Indicator inserted while on the preload table or rack. This will be removed upon the RO's guidance or in the designated safe areas if the stage has one.

SAFE AREA

Competitors may handle firearms in the designated Safe Area where clearly marked.

MEDICAL EMERGENCY

Report any medical emergency immediately to Championship Officials or range personnel.

EYE AND EAR PROTECTION

Any person in and around the firing line must wear eye and ear protection.

Baron Engraving



***Creatively elevating products and
adding lasting value for more than 40 years!***

Visit baronengraving.com

CONDUCT

Good sportsmanship, professionalism, and safety are important principles of the shooting sports and are requirements for attendance and participation in the Championship. Championship Officials will instruct any person who is unable to act accordingly to leave the range. This may lead to disqualification of that person from further participation in the Championship as well as its associated events.

The NRA reserves the right, at its sole determination, to remove competitors, guests, staff and/or spectators for unsafe or unsportsmanlike conduct at any time during the event.”WITHOUT Refund.

DRESS CODE

An article of clothing, which insures the comfort and safety of all competitors and range personnel, is mandatory. Attire worn during all phases of the Championship will be in good taste and appropriate. No person will wear articles of clothing with controversial or offensive slogans, or illustrations. The Match Director may take whatever action is necessary to maintain acceptable clothing standards.

Casual attire is appropriate for the NRA World Shooting Championship award ceremony.

COACHING

The stages in this Championship are individual in nature. Competitors may not coach or assist another competitor while they are actively engaged in a course of fire.

WEATHER

The Match Director may cancel, extend, or alter the course of fire due to inclement weather or for any other reason considered worthy. If necessary, weather delays will occur in 15-minute intervals. Match staff will announce when the weather delay lifts. It is the competitor’s responsibility to remain near the stage ready to resume competing. The NRA also reserves the right to reschedule, cancel or to delay the World Shooting Championship for a period of one or more days in the event of severe weather. Competitors will need to remain ready to resume the championship after the severe weather has passed.

CONCEALED CARRY

Camp Atterbury is an active base and therefore no concealed carry is allowed while on the installation.

FIREARMS AND EQUIPMENT

Match staff will provide firearms, optics, and ammunition for use at each stage. Competitors may not reconfigure any firearm during the event. Competitors may not use any additional shooting equipment not included in the stage design to include blinders, shooting gloves, and slings. However, competitors may wear shooting pants with internal knee padding or bring their own knee pads. Match staff will provide ground cover or shooting mats when applicable.

START POSITIONS

It is the competitor's responsibility to assume the correct start position before firing commences and to maintain a proper firing position on any stage throughout the Championship. Each stage brief will clearly define the start position of the competitor and the firearm, which may include in the competitor's hands, at low ready or port arms.

Pistols, rifles, and shotguns with external safeties will begin the stage with the safety in the "safe" position. Pistols that are double action, double action only and revolvers will begin the stage with the hammer down.

SCORING

Competitors will compete in twelve (12) unique disciplines with unique scoring systems. In some cases, the written stage brief will include modifications to the discipline scoring guidelines.

Match staff will score all stages using an electronic scoring device equipped with Practiscore. Competitors may review their targets and score. If in agreement with their score, competitors will sign on the electronic scoring device by clicking "save" at the bottom of the screen. The signing of a competitor's score by match staff or the competitor shall not be a final act. The signing of a score will not be relief from further penalties or disqualification should Match Officials deem it necessary.

There are two (2) types of scoring stages:

Time Plus: For these stages, a competitor's individual score equals time plus penalties. The competitor's match points equal their score divided by the first-place stage winner's score.

Points: For these stages, a competitor's individual score equals the total number of scoring hits per stage design such as clays or targets with scoring rings valued 5 to 10 and X. A

competitor's score is determined by adding the points on the target. A competitor cannot incur a failure to engage penalty but may incur excessive rounds and over time penalties.

PAPER TARGETS

In stages using paper targets, match staff will change targets according to discipline rules or as needed. All fired targets will be the property of the Championship. Competitor's may not remove or retain fired targets.

Any hole, which touches a scoring ring or perforation, will earn the higher point value. Only holes made by projectiles that pass completely through the target and backer will count for score. Evidence that the projectile made the hole must be present on the target (i.e. crown, grease ring or mark). Holes made by shrapnel, fragments, wads, or flying debris will not count for score or penalty. Shoot through's will not count for score.

FALLING STEEL

Calibration of falling targets will occur prior to the start of the event and as needed per CRO. Steel must fall to score. Swinging or flashing targets must react in the manner prescribed in the stage briefing. Match staff may call hits.

STATIC STEEL

Match staff will call "hit" as appropriate where static steel is in use on the stage. Competitor may ask the RO if they hit the target.

FRANGIBLE TARGETS

Frangible targets (e.g. clay pigeons) must break by gunfire to score. When any piece visibly detaches from the target, the competitor scores a "hit" and the target is "broken." If the target did not break or was not engaged the competitor incurs loss of points on the stage.

PENALTIES

No Shoots: If a competitor shoots a designated "No Shoot" target, that competitor will incur a penalty as per stage brief.

Failure to Follow Procedure: If a competitor fails to follow the procedure detailed in the stage brief, that competitor will incur a 10 second or 10 point penalty. In the event a competitor gains a competitive advantage for the act, "per shot" penalties may apply as determined by the stage CRO, Area Director or Match Director.

Grounding: If a competitor fails to ground a firearm in the designated container, that competitor will incur a 20-second (or point) penalty per occurrence.

Par Time: If a competitor fails to complete a stage within the par time, the stage will score as shot and that competitor will incur all applicable miss and failure to engage penalties per discipline rules. Time will be recorded as of the **last shot fired**.

Interference: If a competitor touches a target after completing a course of fire and prior to the scorer announcing its score, that competitor will receive 0 points for the touched target.

Failure to Engage: If a competitor fails to engage a target in a Time-Plus stage, that competitor will incur a 30-second (or point) penalty per occurrence.

Dropped Firearm: If a competitor drops an unloaded firearm at any time, that competitor will incur a 30-second penalty for that stage. If a Competitor drops a loaded firearm the Competitor will be disqualified.

Start Position: If it is determined by the Match Director that a competitor started a stage in a position other than that as stated in the stage description, that competitor will incur a procedural penalty. If the position gives the competitor a competitive advantage, that competitor will incur a 60 second or 60 point penalty. Either penalty will apply even if the competitor receives a reshoot.

TIES

In the event of a tie in the final overall score, the Statistical Office will break ties using the competitor's scores from the stages in sequential order from Stage 1 through Stage 12 as necessary until the tie is broken.

SCORING CHALLENGE

Competitors must make scoring challenges before signing their scorecard, paper or electronic. The Match Director's decision is final. The procedure for challenging a score is as follows: Discuss with CRO. If the result still is not settled then the Area director will report to the area. All information from range and scoring will be taken into consideration and a decision will be made. If there is still a question the competitor will be moved aside and the CRO will continue with the stage. The Area director will call the Match director over who will make the final decision. There are NO

formal appeals beyond the match director. The match director will make the final decision on scoring related or match related disqualifications or match related issues. The match director or match executive may also disqualify a competitor for unsportsmanlike or reprehensible acts of conduct.

EQUIPMENT CHALLENGE

A competitor may not challenge more than three (3) firearms during the Championship. The procedure for challenging firearms or optics is as follows:

- Competitors select and use the provided firearm(s) for each stage. Once a competitor selects the firearm(s) for use on a stage, the competitor must use that firearm for practice or sighted shots, if allowed.
- A competitor may challenge the accuracy of that firearm during or immediately after the competitor completes their practice or sighted shots.
- If a competitor challenges the firearms accuracy, the CRO on that stage or appropriate match personnel approved by the Match Director will test that firearm for function and accuracy.
- Until the CRO or approved match personnel determine the function and accuracy of that firearm, the competitor who challenges firearms will move off the stage and return to the squad at a time in which the CRO or Match Director selects.
- If the CRO or approved match staff determine the firearm functions properly and accurately, then the challenging competitor will use that firearm on the stage without additional practice or sighted shots.
- If the CRO or approved match personnel determine the firearm does not function properly or accurately, then the challenging competitor will select a new firearm for the stage and proceed with the practice or sighted period. If a competitor objects to the function or accuracy of a firearm during or after completing a course of fire, that competitor may not reshoot the stage.

SUPPLEMENTAL RULES

The Match Director may reference the rulebooks below to make a ruling. Once the Match Director makes a ruling, it shall set the precedence for the remainder of the event.

The Match Director shall exercise good judgment in ruling for the best interest of the shooting sports and competitors. All decisions regarding match rules are at the sole and final

determination of the NRA.

- USPSA Rulebook
- NRA Pistol Rulebook
- SASS
- NRA ARC Rule Book
- FNH USA 3 Gun Championship Rules
- PRS Rules
- NRA ARC
- IDPA
- Clay Target Rules

DISQUALIFICATION

The NRA anticipates hosting an event free from disqualifications. However, due to the need for safety for all persons on the ranges and the need for fairness in competition, disqualification measures must be in place.

The Chief Range Officer of any event, the Area Director of any area, and the Match Director may disqualify any competitor. The Match Director retains final approval authority over any disqualification. The match executive may also disqualify any competitor for unsportsmanlike or reprehensible behavior at any time during the event to include times where shooting is not occurring. Any disqualification from the tournament also results in forfeiture of entry fees.

Match DQ

- A shot that travels over a backstop or berm.
- A shot that strikes the ground within 10 feet of the competitor, spectators, or match staff.
- A shot that occurs while loading, reloading, or unloading a handgun while in prep or after completion of a stage.
- If at any time a competitor allows the muzzle to pass beyond a predetermined, designated or otherwise marked barrier indicating an unsafe direction, pass the 180-degree plane of the firing line, or in any direction deemed by match staff to be unsafe whether loaded or unloaded.
- A dropped firearm, loaded, at any time during the twelve (12) Championship stages and any side match events.
- Allowing the muzzle of a firearm to point at any part of the competitor's body while on a stage (i.e. sweeping).
- Handling live or dummy ammunition (including practice or training rounds, snap caps, and empty cases), loaded magazines or loaded speed loading devices in a designated Safe Area.
- Having a loaded firearm other than when under the direction and supervision of match staff.
- No firearm may contain or have attached any ammo or simulated ammo of any kind in the safe area.

- Any act of “improper gaming” to include any effort to gain an unfair advantage by not engaging all targets presented on a course of fire.
- Any disruptive behavior toward any competitor, match official, match staff or NRA staff, or displays of poor sportsmanship at any time.
- Cheating, altering targets prior to scoring, dishonesty, failing to comply with the reasonable directions of match staff or any behavior likely to bring the sport into disrepute.
- Entering the Championship in an improper division.
- Alcoholic beverages during the Championship
- Non-prescription drugs
- Narcotic substances

Stage DQ

- Failure to ground firearm (s) in a safe condition
- Carrying or possessing an uncased firearm with the action closed, except when on the firing line

AWARDS

AWARD DISTRIBUTION

The NRA has SOLE DETERMINATION of awards and will make the final decision regarding all awards, disputes or award inquiry

In the spirit of “Good Sportsmanship,” competitors must be present at the Awards Ceremony to accept awards or prizes; no competitor may claim a prize on another’s behalf. Citizens of any country may win the Championship, except by those whose countries restrict participation and wining their Championship to their own citizens.

All winners must sign for awards and or prizes and receive official redemption documentation. Competitors shall forfeit any award and or prize by failing to claim them at the Awards Ceremony; the award then becomes the property of the NRA. No shipping of prizes will occur after the conclusion of the Championship except for checks and firearms. Firearms certificates are not transferable!

The NRA and Championship Officials shall assume no responsibility whatsoever for the transfer or transportation of any award, for the legal compliance of such transfer or transport, or for the loss, theft, or damage to same. The winners, US Citizens and International, shall be solely responsible for all fees related to the transfer of any awards or prizes, included but not limited to license fees, transfer fees, handling fees, background fees, and shipping fees. The handling of all awards and prizes will have reasonable security.

AWARD PROCEDURES

Amateur competitors are not eligible for cash awards. The Awards Ceremony will have one (1) prize table each for Professional and Amateur. Match Staff will have their awards ceremony on a different day.The master of ceremonies will invite competitors by name to the prize table. A \$1,000 stage winner award will be granted to the winner of each stage in the PRO Division ONLY. Additional prizes MAY be given at the SOLE determination or the NRA.

MONETARY AWARDS

NRA will mail checks from NRA headquarters in Fairfax, VA after the conclusion of the Championship. International competitors will receive cash awards less 30% tax to the IRS. International competitors will be responsible for paying the 30% tax when collecting merchandise from the prize table.

FIREARMS

A FFL will be on site immediately following the awards ceremony to handle firearm transfers. To transfer your firearm via 4473 the day of the ceremony, you must be an Indiana resident. If you are NOT transferring your firearm the day of, and would like your firearm shipped, Please have a copy of your FFL info with you and be ready to pay \$30 for shipping any firearms. If FFL transfer is not complete (by choice, or delay/deny) at the awards ceremony then competitors must provide their name, address, phone number, current copy of their preferred FFL holder, and \$30 shipping fees to US Defense Solutions at their location, 318A Myers S. Seymour Indiana 47274 October 6th-12th. Email: [HYPERLINK "mailto:Eli@usdsguns.com"](mailto:Eli@usdsguns.com)Eli@usdsguns.com, Phone: 812-271-1102

Winners can provide this information to NRA HQ starting October 13, 2025 by email to comphelp@nrahq. The competitor must pay \$30 for shipping costs, and the NRA is covering transfer fees on the shipping side. Firearms will ship with insurance and adult signature required direct to the FFL holder of the competitor’s choice.

International competitors and junior competitors are not eligible for firearm(s) prizes. It is the responsibility of the competitor to select firearm(s), magazine(s), and accessories that are legal in that competitors state of residence.

Competitors may not sell or trade firearm awards prior to receiving their prize.

TAX REQUIREMENTS

The NRA continually strives to achieve full compliance with all tax laws and regulations. NRA Financial Services conducts a

review of all NRA competitions where a tax event might occur. A tax event occurs when a competitor wins a total amount of at least \$600 in cash or merchandise in a calendar year regardless of age. The NRA will set the estimated value of all prizes, awards, firearms and/or optics etc. All prizes and award estimated amounts are FINAL and not open to debate. **If a competitor claims a prize or award of any form, the competitor accepts the taxable value of the award as assigned to the award by the NRA.** No disputes will be accepted over any fair market values assigned.

Those competitors will receive an IRS Form 1099-Misc from NRA Financial Services. Should you have questions please call NRA Finance at 703.267.1652. This can be done through the new Shooters Portal at <https://competitor.nra.org/> after registering for an account and signing up for a match.

Competitors must submit a completed and subsequently validated IRS Form W-9 (US Citizens) and IRS W-8 BEN (International) upon entry into the Championship to be eligible for awards or prizes. Competitors may not submit IRS forms after the close of registration. Competitors may Opt-Out of submitting a W-9 or W-8. If a competitor opts-out, that competitor will forfeit all monetary and prize table awards for the Championship. The W-9 Opt-Out selection is irreversible.

AWARD BANQUET

There will be limited seating for the awards banquet. Competitors will have priority over seating.

AWARD SCHEDULE

Champion	\$25,000	Title of "World's Greatest Shooter"
2nd	\$2,000	+Prize Table – Pro
3rd	\$1000	+Prize Table – Pro
High Lady	\$2,000	+Prize Table – Pro
High Junior	\$1,000	+Prize Table – Am or Pro
Stage Winner	\$1,000	Pro Division
Amateur	Prize Table – Amateur	
Staff	Prize Table – Staff	

SQUADDING MATRIX

Championship, Day 1

STAGES 1 - 4

Time	Stage 1	Stage 2	Stage 3	Stage 4
7:15 AM	101	102	103	104
8:45 AM	104	101	102	103
10:15 AM	103	104	101	102
11:45 AM	102	103	104	101
?:?-?:??	LUNCH			
1:15 PM	201	202	203	204
2:45PM	204	201	202	203
4:15 PM	203	204	201	202
5:45 PM	202	203	204	201

STAGES 5 - 8

Time	Stage 5	Stage 6	Stage 7	Stage 8
7:15 AM	106	107	107	108
8:45 AM	105	106	106	107
10:15 AM	108	105	105	106
11:45 AM	107	108	108	105
?:?-?:??	LUNCH			
1:15 PM	206	207	207	208
2:45PM	205	206	206	207
4:15 PM	208	205	205	206
5:45 PM	207	208	208	205

STAGES 9 - 12

Time	Stage 9	Stage 10	Stage 11	Stage 12
7:15 AM	109	110	111	112
8:45 AM	112	109	110	111
10:15 AM	111	112	109	110
11:45 AM	110	111	112	109
?:?-?:??	LUNCH			
1:15 PM	209	210	211	212
2:45PM	212	209	210	211
4:15 PM	211	212	209	210
5:45 PM	210	211	212	209

SQUADDING MATRIX

Championship, Day 2

STAGES 1 - 4

Time	Stage 1	Stage 2	Stage 3	Stage 4
7:15 AM	209	210	211	212
8:45 AM	212	209	210	211
10:15 AM	211	212	209	210
11:45 AM	210	211	212	209
?:?-?:??	LUNCH			
1:15 PM	109	110	111	112
2:45PM	112	109	110	111
4:15 PM	111	112	109	110
5:45 PM	110	111	112	109

STAGES 5 - 8

Time	Stage 5	Stage 6	Stage 7	Stage 8
7:15 AM	201	202	203	204
8:45 AM	204	201	202	203
10:15 AM	203	204	201	202
11:45 AM	202	203	204	201
?:?-?:??	LUNCH			
1:15 PM	101	102	103	104
2:45PM	104	101	102	103
4:15 PM	103	104	101	102
5:45 PM	102	103	104	101

STAGES 9 - 12

Time	Stage 9	Stage 10	Stage 11	Stage 12
7:15 AM	205	206	207	208
8:45 AM	208	205	206	207
10:15 AM	207	208	205	206
11:45 AM	206	207	208	205
?:?-?:??	LUNCH			
1:15 PM	105	106	107	108
2:45PM	108	105	106	107
4:15 PM	107	108	105	106
5:45 PM	106	107	108	105

TAURUS
GX4™
CARRY

THE ULTIMATE CARRY GUN.

FOR THE ULTIMATE
EDC ENTHUSIAST.

OPTIC-READY
TORO SLIDE

INTERCHANGEABLE
BACKSTRAPS

9MM,
15-ROUND
CAPACITY

PICATINNY RAIL

RELY ON  TAURUS®

TaurusUSA.com

SQUADDING MATRIX

Championship, Day 3

STAGES 1 - 4

Time	Stage 1	Stage 2	Stage 3	Stage 4
7:15 AM	105	106	107	108
8:45 AM	108	105	106	107
10:15 AM	107	108	105	106
11:45 AM	106	107	108	105
?:?:-?:??	LUNCH			
1:15 PM	205	206	207	208
2:45PM	208	205	206	207
4:15 PM	207	208	205	206
5:45 PM	206	207	208	205

7:15 PM: COMPLETE

STAGES 5 - 8

Time	Stage 5	Stage 6	Stage 7	Stage 8
7:15 AM	209	210	211	212
8:45 AM	212	209	210	211
10:15 AM	211	212	209	210
11:45 AM	210	211	212	209
?:?:-?:??	LUNCH			
1:15 PM	109	110	111	112
2:45PM	112	109	110	111
4:15 PM	111	112	109	110
5:45 PM	110	111	112	109

7:15 PM: COMPLETE

STAGES 9 - 12

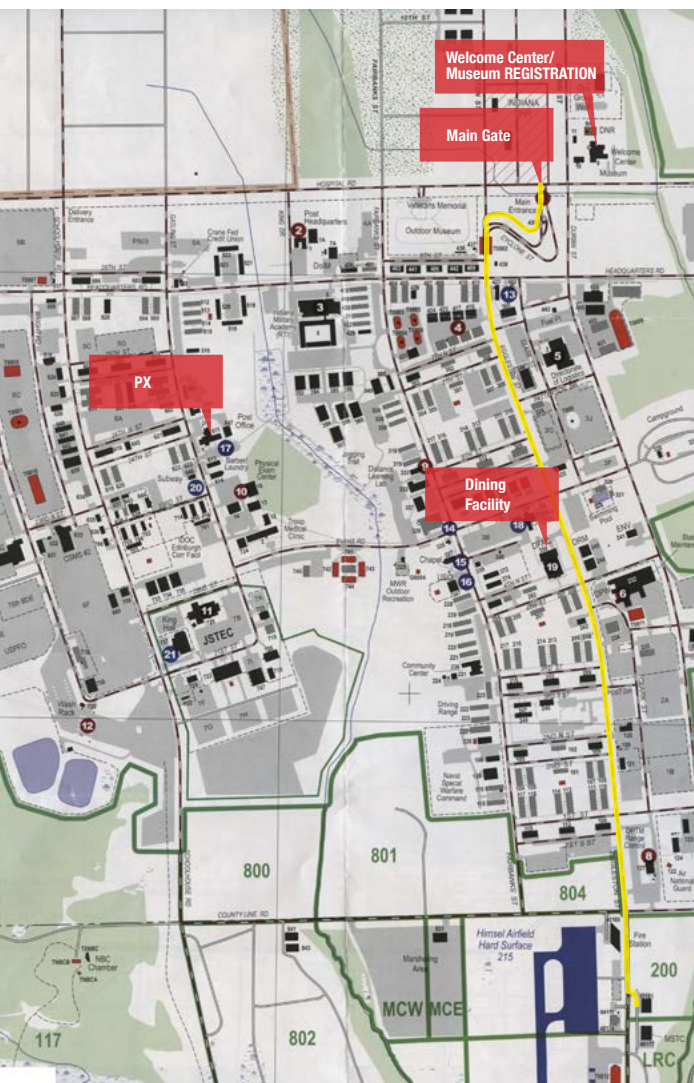
Time	Stage 9	Stage 10	Stage 11	Stage 12
7:15 AM	101	102	103	104
8:45 AM	104	101	102	103
10:15 AM	103	104	101	102
11:45 AM	102	103	104	101
?:?:-?:??	LUNCH			
1:15 PM	201	202	203	204
2:45PM	204	201	202	203
4:15 PM	203	204	201	202
5:45 PM	202	203	204	201

7:15 PM: COMPLETE

CHAMPIONSHIP, DAY 4

This year we are changing things up a little to help with the schedule and add a bit of fun to the mix!

7am on Range 19 we will have a Mystery Team Showdown! The first 3 competitors in each division will be a team captain. Team captains will be responsible for picking 2 more people from their division to create a 3 person team. When all rounds have been fired and the team winners announced, we will head over to the FOB and meet for brunch and the awards ceremony. Good luck to all and see you on the range!



SQUADDING MATRIX

Side Matches

DAY 1

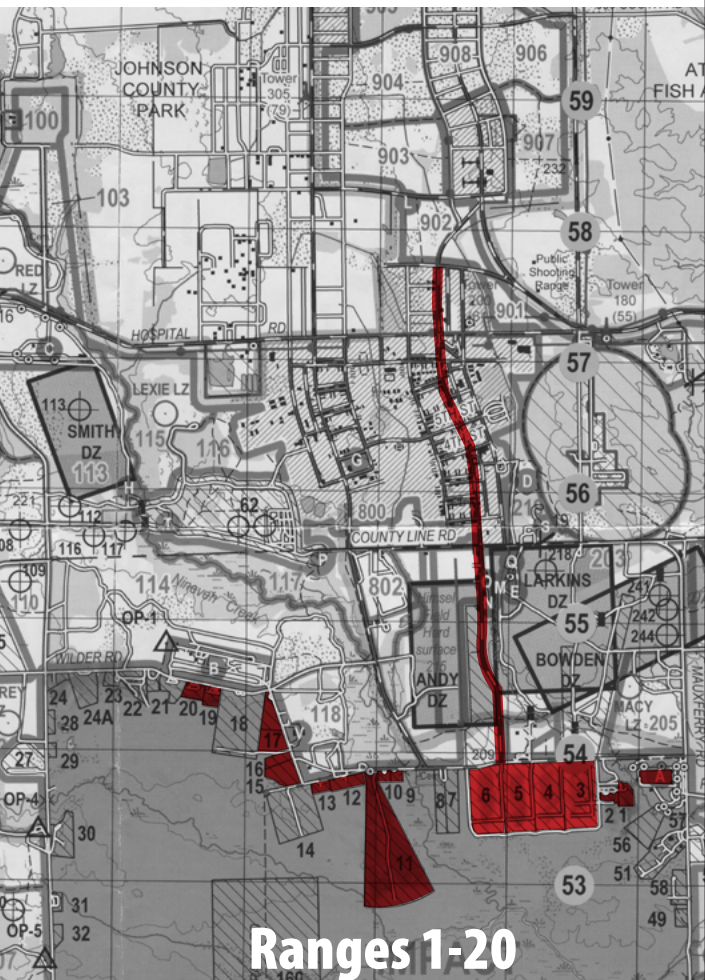
Time	Side Match 1	Side Match 2	Side Match 3	Side Match 4
7:15 AM	201	202	203	204
8:30 AM	206	201	202	203
9:45 AM	207	208	209	210
11:00 AM	212	207	208	209
12:15 PM	LUNCH			
1:30 AM	107	108	109	110
2:45 PM	112	107	108	109
4:00 PM	101	102	103	104
5:15 PM	106	101	102	103

DAY 1

Time	Side Match 5	Side Match 6
7:15 AM	205	206
8:30 AM	204	205
9:45 AM	211	212
11:00 AM	210	211
12:15 AM	LUNCH	
1:30 AM	111	112
2:45 PM	110	111
4:00 PM	105	106
5:15 PM	104	105
6:15 PM	107	108

DAY 2

Time	Side Match 1	Side Match 2	Side Match 3
7:15 AM	111	112	107
8:30 AM	110	111	112
9:45 AM	105	106	101
11:00 AM	104	105	106
12:15 PM	LUNCH		
1:30 PM	205	206	201
2:45 PM	204	205	206
4:00 PM	211	212	207
5:15 PM	210	211	212



SQUADDING MATRIX

Side Matches

DAY 2

Time	Side Match 4	Side Match 5	Side Match 6
7:15 AM	108	109	110
8:30 AM	107	108	109
9:45 AM	102	103	104
11:00 AM	101	102	103
12:15 PM	LUNCH		
1:30 PM	202	203	204
2:45 PM	201	202	203
4:00 PM	208	209	210
5:15 PM	207	208	209

DAY 3

Time	Side Match 1	Side Match 2	Side Match 3	Side Match 4
7:15 AM	203	204	205	206
8:30 AM	202	203	204	205
9:45 AM	209	210	211	212
11:00 AM	208	209	210	211
12:15 PM	LUNCH			
1:30 PM	103	104	105	106
2:45 PM	102	103	104	105
4:00 PM	109	110	111	112
5:15 PM	108	109	110	111

DAY 3

Time	Side Match 5	Side Match 6
7:15 AM	201	202
8:30 AM	206	201
9:45 AM	207	208
11:00 AM	212	207
12:15 PM	LUNCH	
1:30 PM	101	102
2:45 PM	106	101
4:00 PM	107	108
5:15 PM	112	107

Camp Atterbury Safety Briefing

- While aboard the installation there are a few things that you will need to know!
- This is an active base therefore you will encounter military traffic and troops.
- Speed limits are 25mph and 10mph while passing troops.
- Do not proceed past Range control or the flight tower without a vehicle pass from the NRA!
- This will be done at the Welcome Center / Museum when you check in.
- If there is a gate or barricade over the road DO NOT drive around it.
- Never go down range unless the Range OIC or RSO, assigned by the base, tell you its safe to do so.
- Do not occupy a range unless there is a red range flag flying near the road.
- Ensure that you park in designated areas only. The ground may be soft and we don't want to have to repair any ranges after our stay.
- No firearms will be loaded other than on the line when directed by a RSO.
- No handling of firearms unless in a designated safe area
- No handling of ammunition in designated safe areas.
- Camp Atterbury is a large installation and has many activities and large equipment from large trucks to Helicopters so, stay alert! Do not drive outside of the designated routes to get you to and from the designated ranges for the competition.
- Ensure you have eye and ear protection while on anyone of our ranges during your visit.
- Remember to be safe and have fun!

